



PennState
Beaver

UPDATED 06/14/19

Policies, Safety & U

2018 ANNUAL SECURITY REPORT AND ANNUAL FIRE SAFETY REPORT



Table of Contents

From the President	4
From the Assistant Vice President for University Police and Public Safety ...	4
ANNUAL SECURITY REPORT	
PREPARATION OF THE ANNUAL SECURITY REPORT AND DISCLOSURE OF CRIME STATISTICS	5
ABOUT THE UNIVERSITY POLICE AND PUBLIC SAFETY	5
Role, Authority, and Training	5
Safety, Our Number One Priority	5
Working Relationship with Local, State, and Federal Law Enforcement Agencies	5
Crimes Involving Student Organizations at Off-Campus Locations	5
REPORTING CRIMES AND OTHER EMERGENCIES	6
Voluntary, Confidential Reporting	6
Reporting to University Police and Public Safety	6
Reporting to Other Campus Security Authorities	7
TIMELY WARNING REPORTS	7
EMERGENCY RESPONSE AND EVACUATION PROCEDURES	7
Emergency Management at Penn State University	7
Drills, Exercises, and Training	7
Emergency Notification	7
SECURITY OF AND ACCESS TO PENN STATE BEAVER FACILITIES	9
Special Considerations for Residence Hall Access	9
Security Considerations for the Maintenance of Campus Facilities	9
PENN STATE'S RESPONSE TO DOMESTIC VIOLENCE, DATING VIOLENCE, SEXUAL ASSAULT, AND STALKING	9
Our Commitment to Addressing Sexual Assault/Rape, Domestic Violence, Dating Violence, and Stalking	9
What is Consent?	10
Defining Sexual Assault/Rape, Domestic Violence, Dating Violence, and Stalking	10
What to do if you have been the victim of sexual assault, dating violence, domestic violence, or stalking	11
Risk reduction, warning signs of abusive behavior and future attacks	12
Bystander Intervention: We all have a role to play in watching out for each other.....	13
University Procedures for Responding to Reports of Sexual Assault, Domestic Violence, Dating Violence, and Stalking	13
Procedures for Reports of Alleged Dating Violence, Domestic Violence, Sexual Assault, and Stalking Against a Student	15
Preliminary Investigations, and Formal and Informal Resolution Procedures for Reports of Alleged Domestic Violence, Dating Violence, Sexual Assault, and Stalking Against a Student	16
Possible sanctions or protective measures Penn State may impose following a final determination of an institutional procedure against students	19
Disciplinary Proceedings for Reports of Alleged Dating Violence. Domestic Violence, Sexual Assault, and Stalking Against an Employee	20
Possible sanctions or protective measures Penn State may impose following a final determination of an institutional procedure against employees	22
Protecting the Confidentiality of Victims	23
Education and Prevention Programs	23
Sex Offender Registration — Campus Sex Crimes Prevention Act	23
CAMPUS SECURITY POLICIES; CRIME PREVENTION AND SAFETY AWARENESS PROGRAMS	23
Behavioral Threat Management Team	23



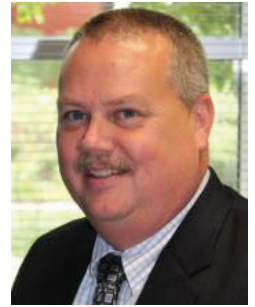


Weapons Policy	23
Pennsylvania Crime Victim Rights	24
Student Conduct	24
Parental Notification Policy	24
Missing Student Policy	25
Daily Crime and Fire Log	26
Crime Prevention and Safety Awareness Programs	26
PENN STATE UNIVERSITY POLICIES GOVERNING ALCOHOL AND OTHER DRUGS	26
Penn State's Alcohol and Drug Policy	26
Residence Life Alcohol Policy	27
Pennsylvania Alcohol-Related Offenses	28
Related Drug Offenses	29
Controlled Substances Act	30
Drugs Risks and Consequences	32
Drug and Alcohol Abuse Education Programs	33
ANNUAL DISCLOSURE OF CRIME STATISTICS	35
Clery Act Crimes	35
THE PENNSYLVANIA UNIFORM CRIME REPORT ACT	39
HOUSING REPORT	40
(1) Types of student housing available (on-campus, off-campus; single room, double, group; single sex, coed; undergraduate, graduate, married; etc.)	40
(2) Policies on housing assignments and requests by students for assignment changes	40
(3) Policies concerning the identification and admission of visitors in student housing facilities	41
(4) Measures to secure entrances to student housing facilities	41
(5) Standard security features used to secure doors and windows in students' rooms	42
(6) Type, number, and description of security training provided to employees, including security personnel, assigned to student housing facilities	42
(7) The type and frequency of programs designed to inform student housing residents about housing security and enforcement procedures ...	43
(8) Policy and any special security procedures for housing students during low-occupancy periods such as holidays and vacation periods	43
(9) Policy on the housing of guests and others not assigned to the student housing or not regularly associated with the institution of higher education	43
ANNUAL FIRE SAFETY REPORT	44
Definitions	44
Residence Hall Fire Drills	44
Fire Safety	44
Fire Statistics for On-Campus Student Housing Facilities	44
Description of On-Campus Student Housing Fire Safety Systems—	
Residence Halls/Apartments	45
Prohibitions on Portable Electrical Appliances, Smoking and Open Flames	45
Evacuation Procedures	45
Fire Safety Education and Training Programs for Students, Faculty, and Staff	46
Fire Incident Reporting	46
Plans for Future Improvements in Fire Safety	46
IMPORTANT PHONE NUMBERS	47
PSUAlert.....	47
Register to Vote	47



From the Assistant Vice President for University Police and Public Safety

Penn State University Police and Public Safety takes very seriously its role to provide and promote a safe and secure environment in which to learn, live, work and play. We strive to be leaders in innovative campus policing and to engage others across the University and surrounding communities in our efforts to consistently provide professional service. By engaging with the community and keeping its members informed, we can increase awareness and promote a positive University experience. We urge you as members of the Penn State community to use this publication as a guide for safe practices on and off campus and look forward to partnering with you to accomplish this important mission.



Charles Noffsinger
*Assistant Vice President for
University Police and Public Safety*

From the President

To the University Community—

We at Penn State are committed to providing a safe campus environment, and we ask that everyone takes ownership of this goal. Over the years and in myriad ways, Penn State has undertaken many important institutional efforts to address safety issues, including this publication. I urge you to review the information about campus safety measures, reporting crimes and other emergencies, as well as the procedures and policies designed to protect our University community. We have no greater priority than the safety of our students, faculty, staff, and visitors to our campuses, but a truly safe campus can only be achieved through the cooperation of everyone. Thank you for attention to this very important mission.

Eric J. Barron
President

Accessibility to Information and Non-Discrimination Policy

The University is committed to equal access to programs, facilities, admission and employment for all persons. It is the policy of the University to maintain an environment free of harassment and free of discrimination against any person because of age, race, color, ancestry, national origin, religion, creed, service in the uniformed services (as defined in state and federal law), veteran status, sex, sexual orientation, marital or family status, pregnancy, pregnancy-related conditions, physical or mental disability, gender, perceived gender, gender identity, genetic information or political ideas. Discriminatory conduct and harassment, as well as sexual misconduct and relationship violence, violates the dignity of individuals, impedes the realization of the University's educational mission, and will not be tolerated. Direct all inquiries regarding the nondiscrimination policy to the Affirmative Action Office, The Pennsylvania State University, 328 Boucke Building, University Park, PA 16802-5901, Tel (814) 863-0471.

Annual Security Report

PREPARATION OF THE ANNUAL SECURITY REPORT AND DISCLOSURE OF CRIME STATISTICS

The University Police and Public Safety Department publishes this report to inform the Penn State community about campus security policies, initiatives to prevent and respond to crime and emergencies, and the occurrence of crime on campus. This report complies with the Jeanne Clery Disclosure of Campus Security Policy and Campus Crime Statistics Act and uses information maintained by the University Police, as well as information provided by other University offices such as Student Affairs, Residence Life, Office of Student Conduct, and information provided by Campus Security Authorities, and local law enforcement agencies. Each of these entities provides updated policy information and/or crime data.

This report provides statistics for the previous three years concerning reported crimes that occurred on campus, in certain off-campus buildings and property owned, leased or controlled by Penn State University. This report also includes institutional policies concerning campus security, such as policies regarding sexual assault, alcohol, and other drugs.

The University distributes a notice of the availability of this Annual Security Report by October 1 of each year to every member of the University community. Anyone, including prospective students and employees, may obtain a paper copy of this report by contacting University Police and Public Safety at 814-865-1864 or by visiting <http://www.police.psu.edu/annual-security-reports/>.

ABOUT UNIVERSITY POLICE AND PUBLIC SAFETY

Role, Authority, and Training

The University Police and Public Safety protect and serve the Penn State Beaver community twenty-four hours a day, 365 days a year. The University Police and Public Safety Department at Penn State Beaver employs six full-time officers, including a Station Commander and five Police Officers.

The police officers at Penn State Beaver campus:

- Have a bachelor's degree or equivalent;
- Complete a training course required of all municipal police officers in Pennsylvania;
- Receive forty or more hours of in-service training each year specializing in crime prevention, emergency first aid, CPR/AED, weapons and tactics;
- Are sworn police officers certified by the Municipal Police Officers' Education and Training Commission, carry firearms and are empowered to make arrests. All criminal incidents are investigated by the University Police and Public Safety at Penn State Beaver. All crimes that occur on campus or University property should be reported to University Police and Public Safety.

The Pennsylvania State University Police and Public Safety are currently seeking Tier 2 accreditation via the Commission on Accreditation for Law Enforcement Agencies Inc. (CALEA).



University Police and Public Safety Mission Statement:
"We serve and protect our community with respect, professionalism and accountability; while striving for excellence."

Safety, Our Number One Priority

The University takes great pride in the community at Penn State University and has many advantages for students, faculty and staff. This community is a great place to live, learn, work, and study, however, this does not mean that the campus community is immune from problems that arise in other communities. With that in mind, Penn State has taken progressive measures to create and maintain a safe environment on campus.

Though the University is progressive with its policies, programs, and education, it is up to each of us to live with a sense of awareness and use reasonable judgment when living, working or visiting on campus.

Working Relationship with Local, State, and Federal Law Enforcement Agencies

The University Police and Public Safety maintain a cooperative relationship with the Pennsylvania State Police, Center Township Police, and other surrounding police agencies. This includes inter-operative radio capability and investigation of serious incidents.

The University Police and Public Safety Department does not have a Memorandum of Understanding or other written agreement with outside police agencies, but enjoys a positive and cooperative relationship with state and local police. Rather, the department relies on the Pennsylvania Municipal Police Jurisdiction Act (MPJA) that authorizes police officers and supervisors of the participating agencies to request mutual aid for incidents based upon a reasonable belief that such aid will enhance the public's and/or officers' safety and efficiency. The act also allows for joint training and cooperation on other matters, such as pre-planned large-scale special events, among the participating agencies.

Crimes Involving Student Organizations at Off-Campus Locations

Penn State University relies on its close working relationships with local law enforcement agencies to receive information about incidents involving Penn State students and recognized student organizations off campus. In coordination with local law enforcement agencies, the University Police and Public Safety will actively investigate certain crimes occurring on or near campus. External law enforcement agencies, including Center Township Police, will formally notify University Police and Public Safety of criminal activity involving students or student organizations.

The University requires all recognized student organizations to abide by federal, state, and local laws, and University regulations. The University may become involved in the off-campus conduct of recognized student organizations when such conduct is determined to affect a substantial University interest (as defined in the University Off-Campus Misconduct Policy at <https://studentaffairs.psu.edu/safety-conduct/student-conduct/students-and-organizations/campus-conduct-policy>).

REPORTING CRIMES AND OTHER EMERGENCIES

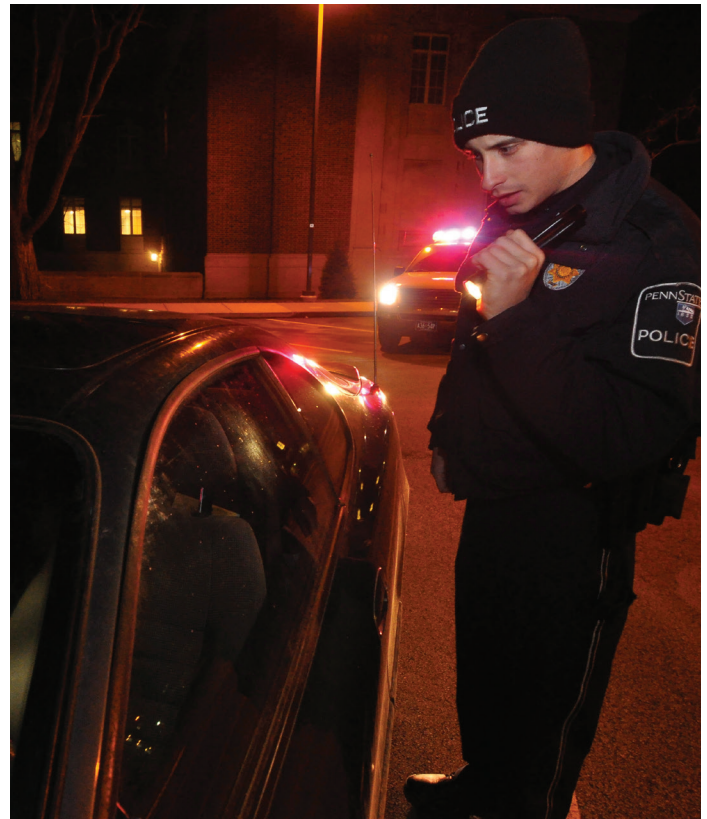
The University has a number of ways for campus community members and visitors to report crimes, serious incidents, and other emergencies to law enforcement and to appropriate University officials. Regardless of how and where you decide to report these incidents, it is critical for the safety of the entire University community that you immediately and accurately report all incidents so that the University Police can investigate the situation and determine if follow-up actions are required, including issuing a Timely Warning or emergency notification.

Official	Campus Address	Phone Number
University Police and Public Safety	100 University Drive Monaca, PA 15061	724-773-3888
Title IX Coordinator	328 Boucke Building University Park, PA 16802	814-863-0471
The Office of Student Conduct	120 Boucke Building University Park, PA 16802	814-863-0342

Voluntary, Confidential Reporting

If crimes are never reported, little can be done to help other members of the community from also becoming victims. We encourage University community members to report crimes promptly and to participate in and support crime prevention efforts. We also encourage University community members to report crimes when the victim is unable to make the report. The University community will be much safer when all community members participate in safety and security initiatives.

If you are the victim of a crime or want to report a crime you are aware of, but do not want to pursue action within the University or criminal justice system, we ask that you consider filing a voluntary, confidential report. Depending upon the circumstances of the crime you are reporting, you may be able to file a report while maintaining your confidentiality. The purpose of a confidential report is to comply with your wish to keep your personally identifying information confidential while taking steps to ensure your safety and the safety of others. The confidential reports allow the University to compile accurate records on the number and types of incidents occurring on campus. Reports filed in this manner are counted and disclosed in the Annual Security Report and Annual Fire Safety Report. In limited circumstances, the Department may not be able to assure confidentiality and will inform you in those cases.



Reporting to University Police and Public Safety

The University encourages all campus community members to promptly report all crimes and other emergencies to University Police and Public Safety in a timely manner. University Police and Public Safety can be reached by telephone at 724-773-3888, 24 hours a day, or at the University Police and Public Safety Building located behind the Student Union Building. University Police maintain dispatch functionality through the Beaver County 911 Center. Although many resources are available, University Police and Public Safety strongly encourage all crimes be reported, whether or not an investigation ensues, to assure the University can assess any and all security concerns and inform the community if there is a significant threat to the University community.

Emergency Call Boxes

The University has installed five emergency call boxes at Penn State Beaver. They are located at the front doors of the Library, the Gymnasium, and the University Police and Public Safety Building as well as on both upper and lower level entry doors of the Ross Administration Building. Emergency call boxes provide direct voice communications to the University emergency line on all portable radios.

Anonymously

If you are interested in reporting a crime anonymously, you can utilize the University Police and Public Safety's online crime reporting website, which can be accessed at <http://police.psu.edu/report-crime>. University Police typically will not attempt to trace the origin of the person who submits this form, unless such is deemed necessary for public safety. You can also submit tips through Pennsylvania Crime Stoppers at 1-800-4PA-TIPS or via the website (<https://www.crimewatchpa.com/crimestoppers/>).

Reporting to Other Campus Security Authorities

While the University encourages all campus community members to promptly report all crimes and other emergencies directly to the University Police and Public Safety Department at 724-773-3888, or to 911, we also recognize that some may prefer to report to other individuals or University offices. The Clery Act recognizes certain University officials and offices as “Campus Security Authorities” (CSAs). The Act defines these individuals, among other individuals, as “An official of an institution who has significant responsibility for student and campus activities, including, but not limited to, student housing, student discipline, and campus judicial proceedings. An official is defined as a person who has the authority and the duty to take action or respond to particular issues on behalf of the institution.”

While the University has identified several thousand CSAs, we officially designate the following offices as places where campus community members should report crimes:

Official	Campus Address	Phone Number
Office of Ethics and Compliance	212 Rider Building State College, PA 16801	814-867-5088
Penn State Hotline		800-560-1637 Available 24/7
Affirmative Action Office	328 Boucke Building University Park, PA 16802	814-863-0471
Penn State Human Resources Labor & Employee Relations Division	The 331 Building University Park, PA 16802	814 -867-0041

Pastoral and Professional Mental Health Counselors

According to the Clery Act, pastoral and professional mental health counselors who are appropriately credentialed and hired by Penn State to serve exclusively in a counseling role are not considered CSAs. As a matter of policy, the University encourages pastoral and professional mental health counselors to notify those whom they are counseling of the voluntary, confidential reporting options available to them.

TIMELY WARNING REPORTS

In an effort to provide timely notice to the campus community in the event of a Clery Act Crime that may pose a serious or ongoing threat to members of the community, the University Police issues “Timely Warnings.” The University may issue a Timely Warning for the following: arson; aggravated assault; criminal homicide; domestic violence; dating violence; robbery; burglary; sexual assault; hate crimes; and stalking. The University may also issue a Timely Warning for alcohol, drug, and weapon arrests or referrals that may cause a continuing threat to the community. University Police will distribute these warnings through a variety of ways, including but not limited to emails, posters, web postings, and media. The University also has the ability to send text message alerts to those who register their cell phone numbers.

The purpose of a Timely Warning is to notify the campus community of the incident and to provide information that may enable the community to take steps to protect themselves from similar inci-

dents. The University will issue Timely Warnings considering on a case-by-case basis the following criteria: (1) one of the above listed crimes are reported; (2) the perpetrator has not been apprehended; and (3) there is a substantial risk to the safety of other members of the campus community because of this crime. An institution is not required to provide a timely warning with respect to crimes reported to a pastoral or professional counselor. The University may also issue an alert in other circumstances, which may pose a significant threat to the campus community.

At Penn State Beaver, the Director of Finance and Business will generally make the determination, in consultation with other University offices, if a Timely Warning is required. However, in emergency situations, any police supervisor may authorize a Timely Warning. For incidents involving off-campus crimes, the University may issue a Timely Warning if the crime occurred in a location used and frequented by the University population.

EMERGENCY RESPONSE AND EVACUATION PROCEDURES

Emergency Management at Penn State University

The Office of Emergency Management assists departments and campuses with developing, maintaining, and implementing emergency operations plans, developing and conducting exercises, hazard and risk education, and building partnerships with external response agencies. The Office of Emergency Management is responsible for assisting with and coordinating the University’s overarching emergency management program, as explained in Policy AD70, Emergency Management (<https://policy.psu.edu/policies/Ad70>).

Each campus within the University system maintains the capabilities necessary to warn and evacuate their respective location. A part of these capabilities includes the development and distribution of emergency response guidelines to students, faculty, and staff. These guidelines are maintained and distributed in a variety of ways. Some campuses post the information in hallways and classrooms; others have this information available on their website.

Drills, Exercises, and Training

To ensure the campus emergency management plans remain current and actionable, the campuses conduct at least one exercise annually. These exercises include, but are not limited to: seminars, drills, tabletops, functional, and full scale. The campuses conduct after-action reviews of all emergency management exercises. The Office of Emergency Management works with each campus location to develop exercise scenarios. Outreach to local state and federal responders and stakeholders is also conducted in order to solicit participation.

In conjunction with at least one emergency management exercise each year, the campus will notify the appropriate campus community of the exercise and remind the community of the University’s PSUAAlert system and emergency response procedures.

Emergency Notification

Penn State University is committed to ensuring the campus community receives timely, accurate, and useful information in the event of a significant emergency or dangerous situation on campus or in the local area that poses an immediate threat to the health and safety of campus community members. Penn State University will

immediately notify the campus community upon confirmation of an emergency or dangerous situation. Penn State University uses the emergency notification system, RAVE, to provide alerts via PSUALERT. PSUALERT is an emergency notification service available to students, faculty and staff. PSUALERT is a closed, opt-out system. PSUALERT can be used to send emergency messages within minutes of the occurrence of an incident. Penn State's emergency communication system is multi-modal, covering various forms of media. Twitter accounts for all twenty-four locations are available to individuals that do not have Penn State e-mail addresses. All Penn State e-mail addresses are automatically entered in the system and cannot be removed by the user. All of the twenty-four campuses have access to PSUALERT for posting.



Confirming the Existence of a Significant Emergency or Dangerous Situation and Initiating the Emergency Notification System:

University Police and Public Safety and/or other Responsible University Authorities may become aware of a critical incident or other emergency situation that potentially affects the health and/or safety of the campus community. Generally, Responsible University Authorities become aware of these situations when they are reported to the campus police or security department or directly to a University employee. A Responsible University Authority is defined as a Penn State employee that has the knowledge, skills, and abilities necessary to evaluate whether or not a particular event requires an emergency notification and to determine if such a notification would compromise the efforts to contain the emergency. This individual may also determine if a message should be sent to benefit the health, safety, and well-being of the campus community for situations that do not pose a significant emergency or dangerous situation.

Once first responders confirm that there is, in fact, an emergency or dangerous situation that poses an immediate threat to the health or safety of some or all members of the campus community, University Police will be made aware of the situation.

The institution will, without delay, and taking into account the safety of the community, determine the content of the notification and initiate the notification system, unless issuing a notification will, in the professional judgement of Responsible University Authorities, compromise efforts to assist a victim or to contain, respond to or otherwise mitigate the emergency.

Determining the Appropriate Segment or Segments of the Campus Community to Receive an Emergency Notification:

The Responsible Campus Authorities, in conjunction with first responders, will determine the appropriate segments to notify and the appropriate modes to use. Generally, campus community members in the immediate area of the dangerous situation (i.e., the building, adjacent buildings, or surrounding area) will receive the emergency notification first. The Responsible Campus Authorities will continually evaluate the situation and assess the need to notify additional segments of the campus population.

Determining the Contents of the Emergency Notification:

Speed and accuracy of the information are of utmost importance in issuing emergency notifications. To expedite this process and ensure each message contains essential information, the mass notification system contains pre-scripted templates for the most probable or highest impact emergencies. These messages identify the situation, allow for input of the location, and identify the immediate protective action that should be taken. The individual authorizing

the message will select the most appropriate template. In those cases where there are no predetermined templates in the system, the individual may use the "alert" template to craft a specific message. The goal is to ensure people are aware of the situation and they know the steps to take to stay safe.

Procedures Used to Notify the Campus Community:

In the event of a situation that poses an immediate threat to members of the campus community, the campus has various systems in place for communicating information quickly. Some or all of these methods of communication may be activated in the event of an emergency. These methods of communications include the mass notification system PSUAlert, which may include: SMS, e-mail, voice, RSS, Twitter, and Facebook. We may also use verbal announcements within buildings, public address systems, fire alarms, and posting to websites as described in the Emergency Notification Annex.

Procedures for Disseminating Emergency Information to the Larger Community (i.e., individuals and organizations outside the campus community):

If the campus activates its Emergency Notification Annex in response to a situation that poses an immediate threat to members of the campus community, the appropriate offices at the campus will notify the larger community about the situation and steps the campus has taken to address the emergency. Primarily, campus communicators/news and media relations is responsible for crisis communications and for updating notices on Facebook, Twitter, and other social networking platforms and for maintaining communications with news outlets, distribution of press releases, and scheduling of press conferences.

Enrolling in the University's Mass Notification System PSUAlert:

We encourage employees and students of the campus community to enroll in PSUAlert. All employees and students with an access account and psu.edu e-mail automatically have their psu.edu e-mail enrolled in the system. They are encouraged to visit the PSUAlert portal at <http://psualert.psu.edu> and add phone numbers and additional e-mails. Members of the larger community are encouraged to follow us on Twitter, Facebook, or our websites.

SECURITY OF AND ACCESS TO PENN STATE BEAVER FACILITIES

At Penn State Beaver campus, academic and administrative buildings are open from 7:00 a.m. until 10:00 p.m., Monday through Thursday. Academic and administrative buildings close at 6:00 p.m. on Friday. Athletic facilities are generally open from 12:00 p.m. until 10:00 p.m. Monday through Thursday, 12:00 p.m. until 6:00 p.m. Friday and Saturday, 12:00 p.m. until 6:00 p.m., and Sunday from 6:00 p.m. until 10:00 p.m. Academic buildings are scheduled to be open on weekends only as needed. Access to individual classrooms and laboratories is limited to those enrolled in the courses meeting there. Likewise, access to most programs is limited to those enrolled in the program or those with authorized access.

Many cultural and athletic events held in Penn State Beaver facilities are open to the public.

Special Considerations for Residence Hall Access

At the Penn State Beaver campus, all residence halls operate under a computerized Access Control and Security Monitoring System with security cameras monitoring activity in the lobby twenty-four hours a day. All exterior doors are locked twenty-four hours a day. Identification cards are coded so that only students who are residents in a particular hall have authorized electronic access entry to that hall; the system denies entry to all unauthorized persons. When any exterior door is left ajar, an audible alarm is activated. When a door is malfunctioning, personnel are summoned for immediate repair. Residents should always lock doors and windows. All residence hall and apartment exterior doors are equipped with locks and with crash bars to ensure a quick emergency exit.

Each resident receives a welcome packet at the beginning of the year, which includes information on safety and security. Students have access to Policies and Rules for Students and Terms, Conditions, and Regulations of the Housing Contract, which describe various housing and security regulations and their enforcement. Only residents and their invited guests are permitted in the living areas of the residence halls. It is the resident's responsibility to ensure that his /her guests are aware of the University and residence hall policies. Guests are not provided with room keys or door access cards. It is the responsibility of residents and staff members to challenge or report individuals who cannot be identified as residents or the guests of residents. When University Police and Public Safety receive a report of an unescorted person in a residence hall, a police officer is dispatched to identify that person. Residence Halls are staffed twenty-four hours a day. University Police personnel also conduct regular checks of common areas in residence halls.

Security Considerations for the Maintenance of Campus Facilities

Penn State University is committed to campus safety and security. At Penn State Beaver, locks, landscaping, and outdoor lighting are designed for safety and security. Sidewalks are designed to provide well-traveled, lighted routes from parking areas to buildings and from building to building. Groundskeeping personnel trim shrubs from sidewalks, walkways, and building entrances to provide a well-lighted route to buildings. All campus walkways are inspected monthly to ensure adequate lighting. Burned-out lights are replaced promptly.

We encourage community members to report promptly any security concern, including concerns about locking mechanisms, lighting, or landscaping, to the University Police and Public Safety at 724-773-3888.

PENN STATE'S RESPONSE TO DOMESTIC VIOLENCE, DATING VIOLENCE, SEXUAL ASSAULT, AND STALKING

The Pennsylvania State University does not discriminate on the basis of sex in its educational programs nor tolerate sexual violence, or sexual harassment, which are types of sex discrimination. Other acts can also be forms of sex-based discrimination and are also prohibited whether gender based or not and include dating violence, domestic violence, and stalking. As a result, The Pennsylvania State University issues this statement of policy to inform the community of our comprehensive plan addressing sexual misconduct, educational programs, and procedures that address sexual assault, domestic violence, dating violence, and stalking, whether the incident occurs on or off campus, and how these events are reported to a University official. In this context, The Pennsylvania State University prohibits the offenses of domestic violence, dating violence, sexual assault, and stalking, and reaffirms its commitment to maintaining a campus environment that emphasizes the dignity and worth of all members of the University community.

Our Commitment to Addressing Sexual Assault/ Rape, Domestic Violence, Dating Violence, and Stalking

The University does not tolerate sexual misconduct or abuse, such as sexual assault, rape, or any other forms of nonconsensual sexual activity. Sexual misconduct in any form violates the Student Code of Conduct, University policies (<https://policy.psu.edu/policies/AD85.html>), and may violate federal and state laws. Violations are subject to disciplinary sanctions through the Office of Student Conduct and/or those outlined in applicable University policies (please refer to Policy AD85 Sexual and/or Gender-Based Harassment and Misconduct (including Sexual Harassment, Sexual Assault, Dating Violence, Domestic Violence, Stalking, and Related Inappropriate Conduct). Penn State's Sexual Harassment and Assault Reporting and Education website is also intended to provide assistance in obtaining information and identifying resources for anyone who becomes aware of or have experienced sexual harassment and assault at <http://titleix.psu.edu/>.

- A Victim Resource Officer (VRO) is available to all victims of crimes. The VRO will provide support and guidance to victims and enable them to receive advocacy, information, and assistance, both judicially and academically.
- University Police are active participants in the County Sexual Assault Response Team (SART). This is to ensure that victims are provided the appropriate care in a timely fashion and with only well-trained professionals.
- On-campus, confidential counseling services are available to students through Counseling and Psychological Services (CAPS) and the Gender Equity Center (<http://studentaffairs.psu.edu/genderequity>).
- "Trauma Drop" is a special procedure that may enable a victim of sexual assault, dating violence, domestic violence, stalking, or other life traumas to retroactively withdraw from a semester or individual courses.

- The University may assist victims with student financial aid assistance and/or visa/immigration assistance if requested and to the extent they are reasonably available.
- All incoming first year undergraduate students, regardless of age, are required to complete Penn State's AWARE- Sexual Assault Awareness learning module prior to arriving on campus. Penn State AWARE helps students increase their knowledge and understanding of relationship violence, sexual assault, stalking, and sexual harassment.
- All new employees are required to complete the "Understanding Title IX at Penn State" online training module. The training module has been designed to ensure that all Penn State employees, graduate assistants, and those with graduate fellowships understand the applicable laws and University policies related to issues of sexual and/or gender-based harassment and misconduct, are cognizant of their responsibilities to report such incidents to the University's Title IX Coordinator, and are aware of how to make a report, if the need should arise.

What is Consent?

Pennsylvania does not define consent in reference to sexual activity. The University defines consent as follows: Consent must be informed, freely given and mutual. If coercion, intimidation, threats or physical force are used there is no consent. If a person is mentally or physically incapacitated or impaired so that such person cannot understand the fact, nature or extent of the sexual situation, there is no consent: this includes impairment or incapacitation due to alcohol or drug consumption, or being asleep or unconscious, where the respondent knew or reasonably should have known that the person was incapacitated. Inducement of incapacitation of another with the intent to affect the ability of an individual to consent or refuse to consent to sexual contact almost always, if not always, negates consent. Silence does not necessarily constitute consent. Whether a person has taken advantage of a position of influence over an alleged victim may be a factor in determining consent.

Defining Sexual Assault/Rape, Domestic Violence, Dating Violence, and Stalking

Sexual Assault: Under Pennsylvania law, sexual assault occurs when a person engages in sexual intercourse or deviate sexual intercourse with a complainant without the complainant's consent.

The Clery Act defines Sexual Assault as any sexual act directed against another person, without consent of the victim, including instances where the victim is incapable of giving consent. This includes Rape, Fondling, Incest, and Statutory Rape as defined by the Clery Act.

According to University policy AD85, Sexual Assault occurs when a person engages in sexual intercourse or deviate sexual intercourse with a complainant without the victim's consent, and includes rape, fondling, incest, or statutory rape. Sexual assault also includes, but is not limited to, attempted or unwanted sexual activity, such as sexual touching and fondling. This includes the touching of an unwilling person's intimate parts (defined as genitalia, groin, breast or buttock, or clothing covering them), or forcing an unwilling person to touch another's intimate parts.

Rape: Under Pennsylvania law, rape occurs when a person engages in sexual intercourse with a complainant: (1) by forcible compulsion; (2) by threat of forcible compulsion that would prevent resistance by a person of reasonable resolution; (3) who is unconscious

or where the person knows that the complainant is unaware that the sexual intercourse is occurring; (4) where the person has substantially impaired the complainant's power to appraise or control his or her conduct by administering or employing, without the knowledge of the complainant, drugs, intoxicants or other means for the purpose of preventing resistance; or (5) who suffers from a mental disability which renders the complainant incapable of consent.

The Clery Act defines Rape as the penetration, no matter how slight, of the vagina or anus, with any body part or object, or oral penetration by a sex organ of another person, without the consent of the victim. This offense includes the rape of both males and females.

University policy AD85 does not specifically define Rape. See the above definition for Sexual Assault.

Domestic Violence: Domestic Violence is not defined by Pennsylvania state statute. Under Pennsylvania Protection From Abuse Act, however, "abuse" is defined as the occurrence of one or more of the following acts between family or household members, sexual or intimate partners or persons who share biological parenthood: (1) Attempting to cause or intentionally, knowingly or recklessly causing bodily injury, serious bodily injury, rape, involuntary deviate sexual intercourse, sexual assault, statutory sexual assault, aggravated indecent assault, indecent assault or incest with or without a deadly weapon. (2) Placing another in reasonable fear of imminent serious bodily injury. (3) The infliction of false imprisonment pursuant to 18 Pa.C.S. § 2903 (relating to false imprisonment). (4) Physically or sexually abusing minor children, including such terms as defined in Chapter 63 (relating to child protective services). (5) Knowingly engaging in a course of conduct or repeatedly committing acts toward another person, including following the person, without proper authority, under circumstances which place the person in reasonable fear of bodily injury. The definition of this paragraph applies only to proceedings commenced under this title and is inapplicable to any criminal prosecutions commenced under Title 18 (relating to crimes and offenses).

The Clery Act defines Domestic Violence as a felony or misdemeanor crime of violence committed –

- By a current or former spouse or intimate partner of the victim;
- By a person with whom the victim shares a child in common;
- By a person who is cohabitating with, or has cohabitated with, the victim as a spouse or intimate partner;
- By a person similarly situated to a spouse of the victim under the domestic or family violence laws of the jurisdiction in which the crime of violence occurred;
- By any other person against an adult or youth victim who is protected from that person's acts under the domestic or family violence laws of the jurisdiction in which the crime of violence occurred.

According to University policy AD85 Domestic violence includes crimes of violence committed against a victim by; (i) a current or former spouse or intimate partner of the victim; (ii) a person with whom the victim shares a child; (iii) a person who is or has cohabitated with the victim as a spouse; (iv) a person similarly situated to a spouse of the victim; or (v) any other person (adult or child) against whom the victim is protected under Pennsylvania's domestic and family violence laws. It is important to recognize that emotional, verbal, and economic abuse are part of the web of domestic violence and can exist without the presence of physical abuse.

Dating Violence: Dating Violence is not specifically defined by Pennsylvania state statute.

The Clery Act defines Dating Violence as violence committed by a person who is or has been in a social relationship of a romantic or intimate nature with the victim. The existence of such a relationship shall be determined based on the reporting party's statement and with consideration of the length of the relationship, the type of relationship, and the frequency of interaction between the persons involved in the relationship.

According to University policy AD85, Dating Violence means violence committed by a person who is or has been in a social relationship of a romantic or intimate nature with the victim. The existence of such a relationship will be based on the reporting party's statement and with consideration of the length and type of relationship and the frequency of interaction between the persons involved in the relationship. Dating violence includes but is not limited to sexual or physical abuse or the threat of such abuse. However, it is important to recognize that emotional, verbal, and economic abuse are part of the web of dating violence and can exist without the presence of physical abuse.

Stalking: Under Pennsylvania law, stalking occurs when a person either: (1) engages in a course of conduct or repeatedly commits acts toward another person, including following the person without proper authority, under circumstances which demonstrate either an intent to place such other person in reasonable fear of bodily injury or to cause substantial emotional distress to such other person; or (2) engages in a course of conduct or repeatedly communicates to another person under circumstances which demonstrate or communicate either an intent to place such other person in reasonable fear of bodily injury or to cause substantial emotional distress to such other person.

The Clery Act defines Stalking as engaging in a course of conduct directed at a specific person that would cause a reasonable person to –

- Fear for the person's safety or the safety of others; or
- Suffer substantial emotional distress.

According to University policy AD85 Stalking is a course of conduct directed at a specific person that would cause a reasonable person to fear for his/her safety or the safety of others, or to suffer substantial emotional distress. Stalking may include repeatedly following, harassing, threatening, or intimidating another by telephone, mail, electronic communication, social media, or any other action, device or method.

What to do if you have been the victim of sexual assault, dating violence, domestic violence or stalking

After an incident of sexual assault, it is important to seek medical attention as soon as possible. In Pennsylvania, evidence may be collected even if a victim chooses not to make a report to law enforcement. It is important that victims of sexual assault not bathe, douche, smoke, change clothing or clean the bed/linen/area where they were assaulted if the offense occurred within the past 96 hours so that evidence, as may be necessary to the proof of criminal activity, may be preserved. In circumstances of sexual assault, if victims do not opt for forensic evidence collection, health care providers can still treat injuries and take steps to address concerns of pregnancy and/or sexually transmitted disease.

Victims of sexual assault, domestic violence, stalking, and dating violence are encouraged to also preserve evidence by saving text messages, instant messages, social networking pages, other communications, and keeping pictures, logs or other copies of documents, if they have any, that would be useful to University hearing boards/investigators or police. Victims of sexual assault, domestic violence, stalking and dating violence are also encouraged to preserve physical and medical evidence as may be necessary to the proof of criminal domestic violence, dating violence, sexual assault or stalking or in obtaining a protection order.

Although the University strongly encourages all members of its community to report violations of this policy to law enforcement, it is the victim's choice whether or not to make such a report, and victims have the right to decline involvement with the police. Whether a victim reports the crime to the police, or not, if the alleged offender is a member of the University community, the victim has a right to proceed to seek University discipline against the offender as explained in more detail in AD85 and in the section of this Annual Security Report entitled, "University Procedures for Responding to Reports of Sexual Assault, Domestic Violence, Dating Violence, and Stalking."

To criminally report an incident involving a sexual assault, domestic violence, stalking, and dating violence, contact the Penn State University Police and Public Safety Department at 724-773-3888 or <http://police.psu.edu/report-crime> and/or local law enforcement. The University will assist any victim with notifying local police if they so desire, including assisting a victim with making a police report. Making a police report can involve calling or visiting the local police agency to initiate a report. A victim of domestic violence, dating violence, sexual assault or stalking who proceeds through the criminal process has the following rights, which, upon request, will be provided to a reporting student or employee in writing, regardless of where the crime occurred:

- To receive information concerning available services for victims;
- To be notified of certain significant actions and proceedings pertaining to your case;
- To be accompanied at all public criminal proceeding by a victim advocate, family member or another person;
- In cases involving personal injury crimes, burglary, and crimes relating to driving under the influence which involved bodily injury, the victim may offer prior comment on the potential reduction or dropping of any charge or changing of a plea;
- To offer prior comment on the sentencing of a defendant to include the submission of a written and/or oral victim impact statement;
- To be restored, to the extent possible, to the pre-crime economic status through restitution, compensation, and the return of property;
- Where applicable, to obtain an order of protection, no contact order, restraining order, or other similar lawful order issued by a criminal, civil or tribal court, or a no contact directive from the University. The University will, when appropriate, issue a no contact directive. To request a University-issued no contact directive, individuals may contact the Office of Sexual Misconduct Prevention and Response, (814-867-0099 or titleix@psu.edu) or the Office of Student Conduct, 120 Boucke Building, University Park, PA 16802 (814-863-0342);

- If personal injury results from the incident, and the offender is sentenced to a state correctional facility, the victim has the opportunity to provide prior comment on and to receive state post sentencing release decisions (work release, parole, pardon, or community treatment center placement) and to be provided immediate notice of escape of the offender;
- If personal injury occurs from the incident and the offender is sentenced to a local correctional facility, the victim has the right to receive notice of release of the offender (including work release, furlough, parole, community treatment center placement) and to be provided with immediate notice of the escape of the offender;
- Where the offender is subject to a PFA order and is committed to a local correctional facility for a violation of the order or for a personal injury crime against a victim protected by the order, the victim has the right to receive immediate notice of the release of the offender on bail;
- When an offender is committed to a mental health facility from a state correctional institution, the victim has the right to notice of the discharge, transfer, or escape of the offender from the mental health facility; and
- The victim has the right to have assistance in the preparation of, submission of and follow-up on financial assistance claims to the Crime Victim's Compensation Program.

Moreover, to the extent of the victim's cooperation and consent, University offices will work cooperatively to ensure that the complainant's health, physical safety, work and academic status are protected, pending the outcome of a formal University investigation of the complaint. For example, if reasonably available, a complainant may be offered changes to academic, living, transportation, or working situations or protective measures in addition to counseling, health services, and assistance in notifying appropriate local law enforcement, which, where appropriate and requested and to the extent permissible by law, will be kept confidential. All options for accommodations and protective measures will be provided to the complainant in writing upon request. The University will make available accommodations or provide protective measures regardless of whether the complainant chooses to report the crime to campus police or local law enforcement.

For information about protecting confidentiality, see the section of this Annual Security Report entitled "Protecting the Confidentiality of Victims."

Risk reduction, warning signs of abusive behavior and future attacks

No victim is EVER to blame for being assaulted or abused. Unfortunately, studies show that a person who is the victim of sexual or dating violence is more likely to be re-victimized. Below are some tips to help reduce your risk, to recognize warnings signs of abusive behavior and how to reduce the risk of a potential attack.

Warning Signs of Abusive Behavior

Domestic and dating abuse often escalates from threats and verbal abuse to violence. And, while physical injury may be the most obvious danger, the emotional and psychological consequences of domestic and dating violence are also severe. Warning signs of dating and domestic violence include:

1. Being afraid of your partner;
2. Constantly watching what you say to avoid a "blow up;"

3. Feelings of low self-worth and helplessness about your relationship;
4. Feeling isolated from family or friends because of your relationship;
5. Hiding bruises or other injuries from family or friends;
6. Being prevented from working, studying, going home, and/or using technology (including your cell phone);
7. Being monitored by your partner at home, work or school; and
8. Being forced to do things you don't want to do.

Help Reduce Your Risk and Avoid Potential Attacks

If you are being abused or suspect that someone you know is being abused, speak up or intervene.

1. Get help by contacting the Gender Equity Center, Counseling Center or Health Center for support services
2. Learn how to look for "red flags" in relationships so you can learn to avoid some of those characteristics in future partners
3. Consider making a report with University Police and/or the Title IX Coordinator and ask for a "no contact" directive from the University to prevent future contact
4. Consider getting a protection from abuse order or no contact order from a local judge or magisterial justice
5. Learn more about what behaviors constitute dating and domestic violence, understand it is not your fault, and talk with friends and family members about ways you can be supported.
6. Trust your instincts—if something doesn't feel right in a relationship, speak up or end it.

Sexual Assault Prevention (From RAINN)

- Be aware of rape drugs
- Try not to leave your drink unattended
- Only drink from un-opened containers or from drinks you have watched being made and poured
- Avoid group drinks like punch bowls
- Cover your drink. It is easy to slip in a small pill even while you are holding your drink. Hold a cup with your hand over the top, or choose drinks that are contained in a bottle and keep your thumb over the nozzle
- If you feel extremely tired or drunk for no apparent reason, you may have been drugged. Find your friends and ask them to leave with you as soon as possible
- If you suspect you have been drugged, go to a hospital and ask to be tested
- Keep track of how many drinks you have had
- Try to come and leave with a group of people you trust
- Avoid giving out your personal information (phone number, where you live, etc.). If someone asks for your number, take his/her number instead of giving out yours

Traveling around campus (walking)

- Make sure your cell phone is easily accessible and fully charged
- Be familiar with where emergency phones are installed on the campus
- Take major, public paths rather than less populated shortcuts
- Avoid dimly lit places and notify campus services if you believe that lights need to be installed in an area
- Be alert and aware of your surroundings and avoid unnecessary distractions

- Travel in groups when possible
- Carry a noisemaker (like a whistle) on your keychain
- Carry a small flashlight on your keychain
- If walking feels unsafe, try calling University Police and Public Safety

Bystander Intervention: We all have a role to play in watching out for each other

Stand for State is Penn State's bystander intervention initiative which focuses on interrupting situations related to sexual and relationship violence, mental health concerns, acts of bias, and risky drinking. It launched university-wide in January 2016 and is built upon the premise that in order to reduce harm on campus, a cultural shift is necessary.

There are two ways that bystanders can take action and contribute to that cultural shift:

1. Reactive Choices: The 3D's are options a bystander can use to respond to concerning situations in a safe and effective way.

Direct: Directly interact with the people involved in the situation and acknowledge concern.

- Options to interrupt sexual violence
 - Grab some friends and check in together
 - “Are you ok?”
 - “I don't think you should hook up with that person. They seem drunk.”
- Options to interrupt acts of bias
 - “I'm not comfortable with what you said. That's a discriminatory comment.”
 - “Are ALL ____ really like that? That's not my experience.”
 - “Are you ok?”

Distract: When an individual does not overtly express concern, but still takes action to interrupt the situation.

- Options to interrupt sexual violence
 - Say their friends have been looking for them
 - Just stick around and don't leave the two alone
 - Offer an alternative activity that separates the two
- Options to interrupt acts of bias
 - Act like you know the target and try to get them to leave with you to “go get coffee”
 - Change the topic of conversation, then follow up later to address the issue with them

Delegate: Asking someone else to intervene. This also notifies someone else of what is going on and that something needs to be done. If someone ever feels unsafe or thinks it would put the target in more danger, a bystander should delegate.

- Options to interrupt sexual violence
 - Talk to their friends and ask them to check in
 - Tell a RA
 - Call 911 or University Police and Public Safety
 - Tell the host of the event, and make sure they check in
- Options to interrupt acts of bias
 - Tell a person in authority, like a manager, supervisor, RA, or party host
 - Ask a friend of the person making comments to get their friend to stop doing that
 - Submit a report to <http://equity.psu.edu/reportbias>

2. Proactive Choices: Daily choices individuals can make that show others that violence and harm will not be tolerated on campus.

No one can do everything, but everyone can do something. When enough people do things to show that they do not tolerate violence and harm at Penn State, it will create an environment where less people are hurt.

- Educate yourself about sexual and relationship violence, and acts of bias.
- Use social media to share content and educate others
- Make it the norm in your friend group to check in with each other
- Learn more about these issues by choosing the topic for a class project or requesting a program for a student organization meeting

University-wide Programs: August 2017-Spring 2018

Interrupting sexual and relationship violence: Provided 78 programs to 2,302 participants

Interrupting acts of bias and discrimination: Provided 27 programs to 715 participants

University Procedures for Responding to Reports of Sexual Assault, Domestic Violence, Dating Violence, and Stalking

In addition to, or in the alternative to, contacting University Police regarding sexual assault, domestic violence, dating violence and stalking, concerns regarding incidents of sexual assault, domestic violence, dating violence, stalking, and/or the University's related policies may also be reported to:

Chris Harris
 Title IX Coordinator
 328 Boucke Building
 University Park, PA 16802
 Phone: 814-863-0471
 Email: titleix@psu.edu

Concerns about conduct by an employee, third party or student at any Commonwealth Campus or other University location should follow the reporting procedures set forth above and on the University's Office of Sexual Misconduct Prevention and Response website (<http://titleix.psu.edu/filing-a-report/>).

Upon making a report to the University that you are the victim of domestic violence, dating violence, sexual assault, or stalking whether the offense occurred on or off campus, the University will provide you with a written explanation of your rights and options.



If you or someone you know is the victim of a sexual assault, domestic violence, dating violence, and/or stalking, the victim has several rights, including:

- The right to report the incident to the University Police or local authorities. The University will assist victims in notifying either the University or local police. Filing a police report does not mean the victim must pursue criminal charges. The victim maintains his or her rights throughout the process.
- The right to receive written information about existing counseling health, mental health, victim advocacy, legal assistance, Visa/immigration assistance and student financial aid.
- The right to receive written notification about options for available assistance in, and how to request changes to academic, living, transportation, and working situations or protective measures.
- In addition to the campus services listed below, several community service organizations can provide counseling, mental health, and other related services to sexual assault victims.
- Resources and contact information can be found on the Sexual Harassment and Assault Reporting and Education website at <http://titleix.psu.edu/>.

Resources:

- **Office of Sexual Misconduct Prevention and Response** – response to reports of sexual harassment and sexual misconduct, coordination of resources and support services, education and training. Title IX Coordinator (<http://titleix.psu.edu>)
- **University Police and Public Safety** – safety support (<http://beaver.psu.edu/university-police-services>)
- **Gender Equity Center** – advocacy, referrals, counseling, academic accommodation, and education (<http://studentaffairs.psu.edu/genderequity>)
- **Affirmative Action Office** – diversity education services (www.psu.edu/dept/aaoffice)
- **University Health Services** – medical treatment (www.studentaffairs.psu.edu/health)
- **Residence Life** – support and referrals (www.studentaffairs.psu.edu/reslife)
- **Counseling and Psychological Services** – counseling and referrals (www.studentaffairs.psu.edu/counseling)
- **Office of Student Conduct** – support, referrals, and resolution of complaints (www.studentaffairs.psu.edu/conduct)
- **Employee Assistance Program** – counseling for faculty/staff (www.healthadvocate.com/psu)
- **Community-based Victim Witness Advocate** – court accompaniment
- **Community-based Rape Crisis/Domestic Violence Services** – shelter, support groups, counseling (listed in phone book under “Abuse”)
- **Penn State Human Resources** – (<https://hr.psu.edu>)
- **Pennsylvania Coalition Against Rape** – 24-hour hotline (1-888-772-7227) (www.pcar.org)
- **Pennsylvania Coalition Against Domestic Violence** – 24-hour hotline (1-800-799-7233) (www.pcadv.org)

- **Penn State Beaver Student Personal Counselor** Counseling and Support is available on campus (724-773-3961)
- **Women’s Center of Beaver County** Call the HELPLINE (724-775-0131)
- **Crisis Center North** CCN Hotline (412-364-5556) Toll Free (866-782-0911)
- **Pittsburgh Action Against Rape** Hotline (866-363-7273)

- If a victim of an alleged sexual assault or relationship violence incident requests a change in her or his living arrangements or academic schedule, the Title IX Coordinator and other offices at the University are obligated to assist the individual with making these changes, as long as they are reasonably available. Furthermore, the University may assist victims with student financial aid assistance and/or visa/immigration assistance if requested and to the extent they are reasonably available.

The following information provides steps to follow should a sexual assault occur:

- Get to a safe place as soon as possible!
- Try to preserve all physical evidence – the victim should not bathe, shower, brush teeth, douche, use the toilet, or change clothing until s(he) has a medical exam. Contact a close friend or relative, if available, who can provide support and accompany the victim to the medical exam and/or police department.
- Get medical attention as soon as possible – an exam may reveal the presence of physical injury that the victim is unaware of. Following a sexual assault, antibiotics are typically given at the time of the exam to help prevent the victim from acquiring certain sexually transmitted diseases. Emergency contraception is provided to all female victims at risk of pregnancy from the assault (if the victim presents within 120 hours). If the victim reports memory loss, loss of consciousness or other circumstances suspicious for a drug-facilitated assault, a urine test may be done if the victim presents within 96 hours. Some of the commonly used “date rape” drugs, however, are only detectable in the urine for six to eight hours after ingestion.
- Contact the police – Sexual assault is a crime, it is vital to report it. It is important to remember that reporting a crime is not the same as prosecuting the crime. The decision to prosecute may be made at another time. Final decision to prosecute is determined by the District attorney.
- Consider talking to a counselor – Seeing a counselor may be important in helping the victim understand her/his feelings and begin the process of recovery.
- Report your experience to the University. As detailed above, the University can provide a wide variety of resources, support services, and procedural options to individuals who may have been a victim of sexual violence. Among other things, a survivor may be provided housing options, academic accommodations, as well as counseling and/or advocacy support.

Procedures for Reports of Alleged Dating Violence, Domestic Violence, Sexual Assault, and Stalking Against a Student

Preliminary Assessment

When a report of a potential incident of domestic violence, dating violence, sexual assault, or stalking is received, the Title IX Coordinator will conduct a preliminary assessment of the available information. The preliminary assessment may include the following:

1. Evaluating whether the report provides identifying information for the Complainant, Respondent, and/or witnesses to the reported incident
2. Conducting a Preliminary Investigation by gathering additional information from the Complainant, Respondent, and/or witnesses to the reported incident in order to assess the need for additional action by the University
3. Contacting the Complainant, if identified, in order to provide written information regarding the following:
 - The University's commitment to providing support and resources to survivors of dating violence, domestic violence, sexual assault, and stalking
 - The Complainant's right to seek medical treatment, as well as an explanation of the importance of preserving forensic and other evidence
 - The Complainant's option to make a report—or to refuse to make a report—to law enforcement, as well as the potential of obtaining a Protection from Abuse or Sexual Violence Protection Order
 - The Complainant's right to invoke formal or informal University disciplinary/resolution processes in connection with their experience, as well as an explanation of what the formal and informal procedural options entail and the Complainant's rights under each
 - The Complainant's right to request appropriate remedial and protective measures, and an explanation of how to request those measures, including:
 1. "No Contact" Directives or Agreements
 2. Academic accommodations
 3. Modifications to housing
 4. Transportation assistance
 5. Modifications to employment situations
 - The University's policy prohibiting retaliation, and its commitment to take prompt action in response to reports of retaliation
 - The Complainant's right to meet with the Title IX Coordinator to discuss their situation, including the procedural options, resources, and support services that may be available in connection with the Complainant's experience
 - The Complainant's right to be accompanied by an advisor of their choosing to any meeting or interview conducted in connection with the reported incident
4. Contacting the Respondent or other witnesses to obtain additional information regarding the reported incident

5. Communicating with University Police and Public Safety and/or other University administrators in order to determine whether the reported incident triggers obligations under the Clery Act or child abuse reporting laws.

If the Complainant is willing, the Title IX Coordinator or a designated staff member from the University's Office of Sexual Misconduct Prevention and Response will meet with the Complainant for an initial discussion of the Complainant's need for support and/or accommodations, as well as their preference for pursuing formal or informal University disciplinary/resolution processes. Possible outcomes of an initial discussion with a Complainant can include the following:

1. The Complainant may wish/agree for the University to proceed with a Preliminary Investigation or informal process only, which may include contacting the Respondent or other witnesses in order to gather additional information or discuss the reported incident and to assess appropriate next steps. The Complainant will be eligible for appropriate accommodations, and appropriate protective/remedial measures may be provided. The Complainant will also be informed that they may request that the University take formal action in response to the reported incident at a later date. It will also be explained that, while there is no deadline for requesting to invoke the University's formal processes in response to an incident of dating violence, domestic violence, sexual assault, or stalking, the passage of time may impact the University's ability to gather information related to the incident. A timeline for next steps will be reviewed. The Complainant will be advised that there may be occasions where the University determines that additional formal or informal resolution processes are required, even if the Complainant does not express a desire to engage in additional process. The Complainant will be informed of the process by which the University makes such determinations, and will be kept apprised of any decision-making processes as they take place.
2. The Complainant may request that the University proceed with the formal process. The Complainant will be eligible for appropriate accommodations, and appropriate protective/remedial measures may be provided. Additional information necessary to proceed with the formal process will be obtained. A timeline for next steps will be reviewed and when appropriate, additional meetings scheduled.
3. The Complainant may express uncertainty as to what protective/remedial measures or procedural options they want or need. In such cases, whenever possible, the Complainant will be provided some reasonable period of time to consider their options and communicate whatever needs/preferences they may have. A timeline for next steps will be reviewed and when appropriate, additional meetings scheduled.
4. The Complainant may request that the University keep their identity confidential, which may include a request that the University decline to proceed with any additional fact-gathering, or formal or informal resolution processes with respect to the reported incident. In such instances, the Complainant will be advised of the "Requests for Confidentiality" procedures set forth below, and the University will follow these procedures in evaluating the Complainant's request and in taking appropriate action.

If a decision is reached to institute formal or informal University resolution processes, or to impose remedial or protective measures that will affect the Respondent, the Respondent will be notified of the proposed action by the Title IX Coordinator, and will receive

written notification of the available procedural options and resources available to them through the University and relevant community agencies, as well as the opportunity to meet with the Title IX Coordinator or a designated staff member from the Office of Sexual Misconduct Prevention and Response to discuss the same.

Complainant Requests for Confidentiality/No Action-Title IX Evaluation Panel

A Complainant may request that the University not share personally-identifying information with the Respondent, or that the University not pursue an investigation or disciplinary action related to the reported incident. The University will seek to honor Complainant requests for confidentiality/no action whenever they are made, but must do so after balancing the Complainant's wishes with the University's obligation to provide for a safe and non-discriminatory environment for all University community members.

In evaluating a Complainant request for confidentiality/no action, the Title IX Coordinator will submit the Complainant's request to a Title IX Evaluation Panel, which will consider the totality of the circumstances in evaluating the Complainant's request. The composition of the Title IX Evaluation Panel may vary based upon the circumstances of the individual case, but will always include the Title IX Coordinator, a representative from University Police and Public Safety, and a representative from the University's Office of Student Conduct. Absent extenuating circumstances, decisions of the Title IX Evaluation Panel will be documented on a Title IX Evaluation Form within one week of a Complainant's request being made.

Factors considered by the Title IX Evaluation Panel may include:

1. The presence of aggravating risk factors, such as;
 - Whether the reported incident suggests a possible pattern of misconduct by the Respondent, by a particular group or organization, or at a particular location;
 - Whether the reported incident involved multiple Respondents;
 - Whether the reported incident involved the use of a weapon, physical violence, or threats of physical violence;
 - Whether the reported incident was facilitated through the use of "date-rape" or similar drugs;
 - Whether the reported incident occurred while the Complainant was unconscious, physically helpless, or otherwise incapacitated at the time that the incident took place;
 - Whether the Complainant is a minor; and/or
 - Whether any signs of planning behavior are present.
2. The potential impact on the Complainant of honoring— or declining to honor—their request;
3. Evidence showing that the Respondent made statements of admission or otherwise accepted responsibility for the reported incident;
4. The existence of any independent information or evidence regarding the reported incident; and
5. Any other available and relevant information.

Depending on the specific circumstances, the presence of one or more of these factors could lead the University to decline the Complainant's request and pursue an investigation or other resolution process.

If a determination is made to honor a request from a Complainant

The Title IX Coordinator will communicate the decision to the Complainant in a prompt and sensitive manner. The Complainant will be advised that the University's ability to investigate and/or respond to a reported incident while also honoring their request may be severely limited. The University may nevertheless take other appropriate steps designed to eliminate the reported conduct, prevent its recurrence, and remedy its effects on the Complainant and the University community. Those steps may include offering appropriate remedial measures to the Complainant, providing targeted training or prevention programs, and/or providing or imposing other remedies tailored to the circumstances. The Complainant will be advised of any additional steps, and will also be informed of their right to request that the University pursue formal or informal resolution processes at a later date.

If a determination is made *not* to honor such a request from a Complainant

The Title IX Coordinator will communicate the decision to the Complainant in a prompt and sensitive manner. The Complainant will be provided with an opportunity to discuss the determination and to provide feedback regarding the University's proposed course of action in response to the reported incident. The Complainant will also be advised that they may participate in any formal or informal resolution processes with respect to the reported incident, but that they will not be required to do so.

Preliminary Investigations, and Formal and Informal Resolution Procedures for Reports of Alleged Domestic Violence, Dating Violence, Sexual Assault, and Stalking Against a Student

Preliminary Investigation

During a preliminary investigation into a report of potential dating violence, domestic violence, sexual assault, or stalking, or when an informal resolution process is requested by a Complainant, a staff member from the Office of Sexual Misconduct Prevention and Response will contact the Respondent to schedule a meeting. In that meeting, the staff member will:

1. review the rights of the Respondent (including available resources, accommodations, and support options, as well as the right to be accompanied by an advisor of their choosing to any meeting or interview conducted in connection with the reported incident);
2. review the alleged details of the reported incident, as appropriate; and
3. solicit the Respondent's perspective on the allegations

Informal Resolution Process

If the Complainant has expressed a desire to proceed with an informal resolution process, the staff member may also discuss with the Respondent:

1. actions requested by the Complainant, as appropriate; and
2. actions recommended by the University.

If, following the discussion, the Respondent voluntarily agrees to participate with the actions necessary to honor the Complainant's and University's requests, steps will be taken to complete those



actions in a prompt and timely manner. Examples of requests include, but are not limited to, counseling for the Respondent, commitment to change/end the behavior, restricted activity, schedule modification, and educational intervention. The Complainant will be notified of the Respondent's agreement and appropriate documentation will be maintained. No reportable disciplinary record is created; however, the information will remain on file should future concerns be reported.

If the Respondent is not willing to honor the requests of the Complainant or the University, a follow-up meeting will be held with the Complainant to determine next steps. In addition, even if the Complainant initially expresses a desire to engage in the informal resolution process only, they may choose to invoke the University's formal resolution processes at a later date.

Formal Resolution Process

Proposed Timeline and How to File a Complaint

Proposed Timeline and How to File a Complaint

A Complainant may issue a formal complaint with respect to an alleged incident of dating violence, domestic violence, sexual assault, or stalking in person, electronically, or via phone, by contacting:

The Office of Sexual Misconduct Prevention and Response
222 Boucke Building
University Park, PA 16802
Phone: 814-867-0099
E-mail: titleix@psu.edu

If a Complainant issues a formal complaint, or if a determination is made to pursue a formal resolution in accordance with the Title IX Evaluation Panel procedures outlined above, the University will initiate a prompt, thorough, fair, and impartial investigation and resolution process. Reports will be investigated and managed by professional staff, Title IX Decision Panel members, or University Conduct Board members who have been trained annually on issues related to domestic violence, dating violence, sexual assault, stalking, and victimization, and on how to conduct an investigation and hearing process that protects the safety of victims and promotes accountability.

The University will observe the following procedures in conducting the formal resolution process, and will strive to complete any formal

resolution process, up to and including a determination of responsibility and assignment of sanctions, within 60 business days of its initiation. If circumstances require that the proposed 60-day timeline be extended in any particular case, both parties will be notified of the extension and the reason it is being sought.

Formal Investigations

Formal Investigations will be conducted by trained investigators designated by the Title IX Coordinator. When a formal investigation process is initiated, the assigned investigator will attempt to gather whatever relevant information may be reasonably available regarding the alleged incident. This may include interviewing the Complainant, Respondent, and/or any other witnesses who are identified during the course of the investigation, as well as gathering available documentary, electronic, or physical evidence. Parties will be provided with adequate notice of the investigation and a meaningful opportunity to be heard.

At the conclusion of the investigation, the assigned investigator will prepare a draft Investigative Packet, which will contain all material information gathered during the investigation and being put forward for consideration in determining whether to hold the Respondent responsible for the alleged incident. The draft Investigative Packet will not contain any findings of responsibility/non-responsibility. The assigned investigator will attempt to complete his or her investigation, including the completion of the draft Investigative Packet, within 35 business days of initiation. If circumstances require that the proposed 35-day investigative timeline be extended in any particular case, both parties will be advised of the extension and the reason it is being sought.

The Complainant and Respondent will be provided with an opportunity to meet with the assigned investigator in order to review the draft Investigative Packet, submit additional information or comments, identify additional witnesses or evidence for the investigator to pursue, and submit any additional questions that they believe should be asked of any other party or witness. The parties will have up to 5 business days to submit any additional questions or follow-up after reviewing the draft Investigative Packet.

Once the parties have responded to the draft Investigative Packet or the 5 business days have elapsed, the assigned investigator will review and address any questions or follow-up submitted by the parties in response to the draft Investigative Packet, as appropriate.



This may include conducting additional investigation. The assigned investigator will then incorporate any revisions or new information into a final Investigative Packet within 5 business days, if possible. The parties will be provided with an opportunity to review any new information that is added to the Investigative Packet before it is finalized.

The final Investigative Packet will be forwarded to a Case Manager in the Office of Student Conduct. The assigned investigator will not include a recommended finding of responsibility in the final Investigative Packet.

Processes for Determining Responsibility

Whenever a final Investigative Packet is received by a Case Manager in the Office of Student Conduct, the Case Manager will review the Packet and, if s/he determines that the information in the Investigative Packet reasonably supports a Code of Conduct violation, the Case Manager may recommend charges and sanctions to the Respondent. If the Case Manager determines that the information in the Investigative Packet does not reasonably support a Code of Conduct violation, then the case will be closed without charges.

If charges are issued, the Respondent and Complainant will both be provided with an opportunity to meet with a Case Manager from the Office of Student Conduct to discuss and respond to the charges and ask questions about the adjudicative process. If charges are assigned by the Case Manager and the Respondent chooses to accept responsibility, both the Respondent and Complainant will have the opportunity to request a sanction review pursuant to applicable procedures listed in the OSC Procedures document (<https://studentaffairs.psu.edu/support-safety-conduct/student-conduct/code-conduct>).

If the Respondent does not accept responsibility for the charges, the University may adjudicate the matter through the use of either a Title IX Decision Panel or a University Conduct Hearing. The University will maintain ultimate discretion regarding which process to use in adjudicating each particular case, but cases involving allegations of non-consensual sexual penetration (anal, oral, or vaginal), as well as those involving the use of significant physical violence and/or the issuance of threats of significant physical violence will typically be resolved through a Title IX Decision Panel process.

Title IX Decision Panel

If a Respondent chooses to contest charges issued by a Case Manager and a determination is made to utilize a Title IX Decision Panel to determine responsibility in the case, the Investigative Packet will typically be forwarded to a Title IX Decision Panel, whose members will meet to deliberate collectively as to the Respondent's responsibility or non-responsibility, based on a preponderance of evidence standard. Each party will be provided with a reasonable opportunity to appear before the Title IX Decision Panel in order to personally highlight the information in the investigative packet they feel is most relevant. Both parties may provide questions that may be asked of the other party. Questions will be submitted to the Panel in writing, and the Chair of the Panel will review each question for relevance and appropriateness before determining whether it will be posed. The parties will never be present in the same room together, but each party will have the option to observe the other's interactions with the Panel through remote video or audio access, if reasonably practicable.

University Conduct Hearing

Determinations of responsibility in matters not submitted to a Title IX Decision Panel will be resolved through a University Conduct Hearing. The standard of evidence in a University Conduct Hearing is a preponderance of evidence standard. Both parties in a University Conduct Hearing may question witnesses. More information regarding University Conduct Hearing procedures can be found at <https://studentaffairs.psu.edu/support-safety-conduct/student-conduct/code-conduct>.

Participation and the Right to Advisors

The Respondent and Complainant will both be afforded reasonable opportunity to attend and participate in proceedings before the Title IX Decision Panel and/or University Conduct Hearing. In addition, the Respondent and Complainant may each be assisted during proceedings by an advisor of their choice, pursuant to the policies outlined in the Office of Student Conduct Procedures document <https://studentaffairs.psu.edu/safety-conduct/student-conduct/advisers-and-attorneys>. Each party will be allowed to submit an impact statement that will be reviewed by the Title IX Decision Panel or University Conduct Hearing officer(s), should the Respondent be found responsible for violating the Code.

Notification of Determination and the Right to Appeal

Both the Respondent and the Complainant will be notified simultaneously, in writing, of the decision once the written outcome has been submitted to the Case Manager by the Title IX Decision Panel or University Conduct Hearing. Both the Respondent and the Complainant will also be notified, in writing, of the appeal procedure, of any change to the decision that occurs prior to the time that the decision becomes final, and when the decision becomes final. If suspension or expulsion is either assigned or was within range for the charges, both the Complainant and the Respondent will have the opportunity to file an appeal. At the conclusion of any appeal process, both the Complainant and the Respondent will be notified simultaneously, in writing, of the final outcome.

Possible sanctions or protective measures Penn State may impose following a final determination of an institutional procedure against students

Following a final determination of an institutional procedure regarding domestic violence, dating violence, sexual assault or stalking, the University may impose the following sanctions or protective measures:

Sanctions up to and including expulsion from the University. The following sanctions may be imposed upon any student found to have been responsible for an incident of dating violence, domestic violence, sexual assault, or stalking. More than one of the sanctions listed below may be imposed for any single violation.

Primary Administrative Sanctions:

- **CONDUCT CONVERSATION:** A conduct conversation is used in limited circumstances in very minor level cases. It is formal documentation that the student's misconduct has been discussed and future violations may result in further discipline action.
- **CONDUCT WARNING:** A conduct warning is an indication to a student that his/her conduct violated the Code of Conduct and that further misconduct will result in more severe disciplinary action.
- **CONDUCT PROBATION:** Conduct probation is assigned for a specified period of time and is intended to foster reflection, responsibility, and improved decision-making. Additional conditions and/or educational programs may be assigned as a component of the probation. Future established misconduct, failure to comply with any conditions or to complete any assignments may lead to a more severe disciplinary action, including suspension or expulsion.

Conduct probation may be recorded on the official University transcript when, either due to the serious nature of the offense or when a student's disciplinary history is significant, the Office of Student Conduct determines a notation is merited.

- **CONDUCT SUSPENSION:** Disciplinary suspension from the University is assigned for a specified period of time. A suspended student is precluded from registration, participation in any class, activity or program of the University, and residence on campus. In addition, the student is prohibited from using or visiting University facilities unless special permission is obtained from the Senior Director or designee. During the period of the suspension, a notation will appear on the student's official University transcript.

- **INDEFINITE EXPULSION:** Indefinite expulsion from the University is for a period of not less than one calendar year, and re-enrollment must be approved by the Vice President for Student Affairs or designee at University Park or by the Chancellor or designee at other campus locations. During a period of indefinite expulsion, a student is precluded from registration, participation in any class, activity or program of the University, and residence on campus. In addition, the student is prohibited from using or visiting University facilities unless special permission is obtained from the Senior Director or designee. If a student wishes to return to the University after the period of his or her indefinite expulsion, he/she must request re-enrollment (in writing) from the Senior Director or designee. During the period of the expulsion, a notation will appear on the student's official University transcript.
- **EXPULSION:** Expulsion of a student from the University is permanent. A student is precluded from registration, participation in any class, activity or program of the University, and residence on campus. In addition, the student is prohibited from using or visiting University facilities unless special permission is obtained from the Senior Director or designee. Expulsion requires administrative review and approval by the President. The sanction of expulsion is permanently noted on a student's official University transcript.

Secondary Administrative Sanctions:

- **HOUSING REVIEW:** Housing Review is implemented when an on-campus student has either breached the terms and conditions of his/her housing contract/lease agreement or has engaged in inappropriate behavior in or near the residence halls. This review is for a specified period of time with the understanding that any further breach of the conditions of their housing contract/lease agreement, during the time specified, may result in an extension of review of housing contract or a termination of a student's housing contract, or a notice of non-renewal of a lease agreement. A housing review will typically be assigned in conjunction with other administrative sanctions.
- **ROOM REASSIGNMENT:** A student is relocated from one housing assignment to another residence hall assignment. This may be a temporary or permanent change of assignment. This sanction should be made after consultation with the residence life staff member. This sanction can be assigned independently or in conjunction with other administrative and active sanctions.
- **LOSS OF HOUSING:** Loss of housing permanently separates a student from the University housing program. This separation is typically immediate.
- **LOSS OF PRIVILEGE:** Loss of Privilege involves the withdrawal of the use of service, participation in an activity, or withdrawal of privileges consistent with offense(s). Loss of privilege may be imposed separately or in addition to other sanctions.

Active Sanctions:

- Active sanctions are sanctions that the University reserves the right to assign to students in addition to administrative sanctions. These include, but are not limited to the following: administrative directives, alcohol or drug education, counseling, reflection papers, projects, decision-making workshops/modules, meetings with staff or others, restitution, and sanctioned service.

Other Sanctions:

- The University reserves the right to impose other sanctions in addition to those listed above in response to specific circumstances of a case.
- Administrative Directives for No Contact: (Students may request a Directive for No Contact through the Senior Director of Office of Student Conduct or the Director of Residence Life)
- Restriction from portions of Campus
- Change in housing assignment
- Change in course assignment
- Mandated Psychological Evaluation and/or Counseling
- Mandated Education

Disciplinary Proceedings for Reports of Alleged Dating Violence, Domestic Violence, Sexual Assault, and Stalking Against an Employee

(For procedures related to reports of other forms of sexual harassment by an employee, please go to <https://www.psu.edu/dept/aaoffice/resolution.htm>)

Preliminary Assessment

When a report of a potential incident of domestic violence, dating violence, sexual assault, or stalking against an employee is received, the Title IX Coordinator will conduct a preliminary assessment of the available information. The preliminary assessment may include the following:

1. Evaluating whether the report provides identifying information for the Complainant, Respondent, and/or witnesses to the reported incident
2. Conducting a Preliminary Investigation by gathering additional information from the Complainant, Respondent, and/or witnesses to the reported incident in order to assess the need for additional action by the University
3. Contacting the Complainant, if identified, in order to provide written information regarding the following:
 - The University's commitment to providing support and resources to survivors of dating violence, domestic violence, sexual assault, and stalking
 - The Complainant's right to seek medical treatment, as well as an explanation of the importance of preserving forensic and other evidence
 - The Complainant's option to make a report—or to refuse to make a report—to law enforcement, as well as the potential of obtaining a Protection from Abuse or Sexual Violence Protection Order
 - The Complainant's right to invoke formal or informal University disciplinary/resolution processes in connection with their experience, as well as an explanation of what the formal and informal procedural options entail and the Complainant's rights under each
 - The Complainant's right to request appropriate remedial and protective measures, and an explanation of how to request those measures, including:
 1. "No Contact" Directives or Agreements
 2. Academic accommodations, if applicable
 3. Transportation assistance
 4. Modifications to employment situations

- The University's policy prohibiting retaliation, and its commitment to take prompt action in response to reports of retaliation
 - The Complainant's right to meet with the Title IX Coordinator to discuss their situation, including the procedural options, resources, and support services that may be available in connection with the Complainant's experience
 - The Complainant's right to be accompanied by an advisor of their choosing to any meeting or interview conducted in connection with the reported incident
4. Contacting the Respondent or other witnesses to obtain additional information regarding the reported incident
 5. Communicating with University Police and Public Safety and/or other University administrators in order to determine whether the reported incident triggers obligations under the Clery Act or child abuse reporting laws.

If the Complainant is willing, the Title IX Coordinator or their designee from the Affirmative Action Office (AAO) staff, will meet with the Complainant for an initial discussion of the Complainant's need for support and/or accommodations, as well as their preference for pursuing formal or informal University disciplinary/resolution processes. Possible outcomes of an initial discussion with a Complainant can include the following:

1. The Complainant may wish/agree for the University to proceed with a Preliminary Investigation or informal process only, which may include contacting the Respondent or other witnesses in order to gather additional information or discuss the reported incident and to assess appropriate next steps. The Complainant will be eligible for appropriate accommodations, and appropriate protective/remedial measures may be provided. The Complainant will also be informed that they may request that the University take formal action in response to the reported incident at a later date. It will also be explained that, while there is no deadline for requesting to invoke the University's formal processes in response to an incident of dating violence, domestic violence, sexual assault, or stalking, the passage of time may impact the University's ability to gather information related to the incident. A timeline for next steps will be reviewed. The Complainant will be advised that there may be occasions where the University determines that additional formal or informal resolution processes are required, even if the Complainant does not express a desire to engage in additional process. The Complainant will be informed of the process by which the University makes such determinations, and will be kept apprised of any decision-making processes as they take place.
2. The Complainant may request that the University proceed with the formal process. The Complainant will be eligible for appropriate accommodations, and appropriate protective/remedial measures may be provided. Additional information necessary to proceed with the formal process will be obtained. A timeline for next steps will be reviewed and when appropriate, additional meetings scheduled.
3. The Complainant may express uncertainty as to what protective/remedial measures or procedural options they want or need. In such cases, whenever possible, the Complainant will be provided some reasonable period of time to consider their options and communicate whatever needs/preferences they may have. A timeline for next steps will be reviewed and when appropriate, additional meetings scheduled.

4. The Complainant may request that the University keep their identity confidential, which may include a request that the University decline to proceed with any additional fact-gathering, or formal or informal resolution processes with respect to the reported incident. In such instances, the Complainant will be advised of the “Requests for Confidentiality” procedures set forth below, and the University will follow these procedures in evaluating the Complainant’s request and in taking appropriate action.

If a decision is reached to institute formal or informal University resolution processes, or to impose remedial or protective measures that will affect the Respondent, the Respondent will be notified of the proposed action by the Title IX Coordinator or their designee, and will receive written notification of the available procedural options and resources available to them through the University and relevant community agencies, as well as the opportunity to meet with the Title IX Coordinator or their AAO designee to discuss the same.

Complainant Requests for Confidentiality/No Action-Title IX Evaluation Panel

A Complainant may request that the University not share personally-identifying information with the Respondent, or that the University not pursue an investigation or disciplinary action related to the reported incident. The University will seek to honor Complainant requests for confidentiality/no action whenever they are made, but must do so after balancing the Complainant’s wishes with the University’s obligation to provide for a safe and non-discriminatory environment for all University community members.

In evaluating a Complainant request for confidentiality/no action, the Title IX Coordinator will submit the Complainant’s request to a Title IX Evaluation Panel, which will consider the totality of the circumstances in evaluating the Complainant’s request. The composition of the Title IX Evaluation Panel may vary based upon the circumstances of the individual case, but will always include the Title IX Coordinator, a representative from University Police and Public Safety, and a representative from the University’s Office of Human Resources. Absent extenuating circumstances, decisions of the Title IX Evaluation Panel will be documented on a Title IX Evaluation Form within one week of a Complainant’s request being made.

Factors considered by the Title IX Evaluation Panel may include:

1. The presence of aggravating risk factors, such as;
 - Whether the reported incident suggests a possible pattern of misconduct by the Respondent, by a particular group or organization, or at a particular location;
 - Whether the reported incident involved multiple Respondents;
 - Whether the reported incident involved the use of a weapon, physical violence, or threats of physical violence;
 - Whether the reported incident was facilitated through the use of “date-rape” or similar drugs;
 - Whether the reported incident occurred while the Complainant was unconscious, physically helpless, or otherwise incapacitated at the time that the incident took place;
 - Whether the Complainant is a minor; and/or
 - Whether any signs of planning behavior are present.
2. The potential impact on the Complainant of honoring—or declining to honor—their request;

3. Evidence showing that the Respondent made statements of admission or otherwise accepted responsibility for the reported incident;
4. The existence of any independent information or evidence regarding the reported incident; and
5. Any other available and relevant information.

Depending on the specific circumstances, the presence of one or more of these factors could lead the University to decline the Complainant’s request and pursue an investigation or other resolution process.

If a determination is made to honor a request from a Complainant

The Title IX Coordinator will communicate the decision to the Complainant in a prompt and sensitive manner. The Complainant will be advised that the University’s ability to investigate and/or respond to a reported incident while also honoring their request may be severely limited. The University may nevertheless take other appropriate steps designed to eliminate the reported conduct, prevent its recurrence, and remedy its effects on the Complainant and the University community. Those steps may include offering appropriate remedial measures to the Complainant, providing targeted training or prevention programs, and/or providing or imposing other remedies tailored to the circumstances. The Complainant will be advised of any additional steps, and will also be informed of their right to request that the University pursue formal or informal resolution processes at a later date.

If a determination is made *not* to honor a request from a Complainant

The Title IX Coordinator will communicate the decision to the Complainant in a prompt and sensitive manner. The Complainant will be provided with an opportunity to discuss the determination and to provide feedback regarding the University’s proposed course of action in response to the reported incident. The Complainant will also be advised that they may participate in any formal or informal resolution processes with respect to the reported incident, but that they will not be required to do so.

Formal Resolution Process (Employee Disciplinary Proceeding)

If a report of alleged sexual assault, dating violence, domestic violence or stalking is made against an employee, a disciplinary proceeding shall be conducted. The proceeding will include a prompt, thorough, fair, and impartial investigation and resolution process. Both the Respondent and Complainant will have the right to be assisted by an advisor of their choosing during any meeting conducted as part of the disciplinary proceeding.

How to File a Complaint

Complaints of alleged incident of dating violence, domestic violence, sexual assault, or stalking committed by a University employee may issue a formal complaint with respect to an in person, electronically, or via phone, by contacting:

The Office of Sexual Misconduct Prevention and Response
222 Boucke Building
University Park, PA 16802
Phone: 814-867-0099
E-mail: titleix@psu.edu

Formal Investigations

If a complaint of alleged dating violence, domestic violence, sexual assault, or stalking is filed against an employee, the Title IX Coordinator or their AAO designee will commence the disciplinary proceeding by conducting a formal investigation of the reported misconduct. Investigators will be trained annually on issues related to domestic violence, dating violence, sexual assault, stalking, and victimization, and on how to conduct an investigation and hearing process that protects the safety of victims and promotes accountability.

The University will strive to complete the formal investigation within 60 business days of its initiation. If circumstances require that the proposed 60-day timeline be extended in any particular case, both parties will be notified of the extension and the reason it is being sought.

Determination Report

Upon completion of the formal investigation, a written Determination Report will be provided simultaneously to the Complainant, Respondent, and the appropriate Dean or Administrative Officer with authority to impose disciplinary sanctions on the Respondent, or their designee, in accordance with applicable employment policies and procedures. In consultation with the appropriate Dean or Administrative Officer, the Title IX Coordinator shall schedule a disciplinary meeting(s) within thirty (30) business days of the date of the Determination Report. The disciplinary meeting(s) shall afford the Complainant and the Respondent separate opportunities to comment on the conclusion and recommendations of the Determination Report. Comments may be in writing or in-person (or both) at the independent discretion of the Complainant or Respondent.

Disciplinary Report

Upon consideration of the Determination Report, along with any additional comments, the appropriate Dean or Administrative Officer and the Title IX Coordinator, in consultation with the Human Resources Strategic Partner shall render a decision. If the Title IX Coordinator and the appropriate Dean or Administrative Officer concludes, by a preponderance of the evidence, that a policy violation occurred, s/he/they will decide on appropriate sanctions and prepare a Disciplinary Report. The Disciplinary Report will include the disciplinary sanctions as well as remedial measures and recommendations for prevention of retaliation.

If the Title IX Coordinator and the appropriate Dean or Administrative Officer concludes, by a preponderance of evidence, that no policy violation occurred, s/he/they will prepare a Disciplinary Report and the complaint will be documented and closed. Remedial measures, accommodations for the Complainant, and recommendations for the prevention of retaliation may be considered when no policy violation is found. Please refer to AD67 - Disclosure of Wrongful Conduct and Protection from Retaliation and/or AD85 Sexual and/or Gender-Based Harassment and Misconduct (including Sexual Harassment, Sexual Assault, Dating Violence, Domestic Violence, Stalking, and Related Inappropriate Conduct) for additional information on the prevention of retaliation.

A copy of the Disciplinary Report shall be provided simultaneously to the Complainant, the Respondent, and the Human Resources Strategic Partner(s) of the employee(s) within fifteen (15) business days of the conclusion of the disciplinary meeting. The Title IX Coordinator will maintain a copy of both the Determination Report and Disciplinary Report.

Appeal of Disciplinary Proceeding

In cases of reports of sexual assault, dating violence, domestic violence, or stalking against an employee, both the Complainant and the Respondent shall be given simultaneous written notice of their right to appeal from the Disciplinary Report as to findings of policy violation and appropriateness of disciplinary action and recommendations for prevention of retaliation. In cases where the Respondent is a faculty member, academic administrator or other academic employees, appeal shall be to the Vice Provost for Academic Affairs. In cases where the Respondent is a non-academic employee, appeal shall be to the Senior Director of Labor and Employee Relations. Appeal shall be in writing within fifteen (15) business days of receipt of the Disciplinary Report, and shall list the specific matters to be appealed. Appropriate grounds for appeal are instances where procedural error or previously unavailable relevant evidence could significantly impact the outcome of a case or where a sanction is substantially disproportionate to the findings. Within fifteen (15) business days of the written appeal, the Vice Provost for Academic Affairs or Senior Director of Labor and Employee Relations shall issue a Final Determination in writing simultaneously to the Complainant, Respondent, the Human Resources Strategic Partner, Title IX Coordinator and the appropriate Dean or Administrative Officer.

Throughout the process outlined above, the Complainant shall be offered appropriate remedial measures and protection from retaliation. The Complainant shall also be informed by the Title IX Coordinator on how to make a criminal report and how to file a complaint with the appropriate state or federal agency along with a copy of AD85.

Burden of Proof

As noted, the standard of evidence for determining whether a violation occurred, specifically when investigating alleged domestic violence, dating violence, sexual assault, and stalking, is “preponderance of evidence.”

Possible sanctions or protective measures Penn State may impose following a final determination of an institutional procedure against employees

- Employee termination from the University
- Unpaid suspension
- Restrictions from all or portions of campus
- Change in working facility
- Mandated education
- Written reprimand in personnel file
- Removal from classroom teaching
- Tenure revocation
- Withhold salary increase (from one to several years)
- Removal of endowed chair
- Removal of emeritus status
- Removal of graduate school status
- Termination of research project funding
- Removal from administrative position

Protecting the Confidentiality of Victims

All members of the University Conduct Board, Title IX Decision Panel, case managers and investigators have been trained in confidentiality of student records and the provisions of the Family Educational Rights to Privacy Act. Personally identifiable information about the victim, and other necessary parties where appropriate, will be treated as confidential and only shared with persons with a specific need to know who are investigating/adjudicating the complaint or delivering accommodations or protective measures or support services to the complainant. The University does not publish the personally identifiable information of the crime victims in its Annual Security Report or other publicly available disclosures nor does it house identifiable information regarding victims in the campus police department's Daily Crime Log or online. Victims may request that directory information on file be removed from public sources by completing a Request to Withhold Directory Information from posted on the Office of the University Registrar's website at https://www.registrar.psu.edu/student_forms/withhold_dir_info_form.cfm.

Education and Prevention Programs

The University engages in comprehensive educational programming to prevent domestic violence, dating violence, sexual assault and stalking. Educational programming consists of primary prevention and awareness programs for all incoming students and new employees and ongoing awareness and prevention campaigns for the campus community that:

- Identifies domestic violence, dating violence, sexual assault and stalking as prohibited conduct;
- Defines domestic violence, dating violence, sexual assault, and stalking including how those terms are defined in the Commonwealth of Pennsylvania;
- Defines what behavior and actions constitute consent to sexual activity in the Commonwealth of Pennsylvania;
- Provides safe and positive options for bystander intervention that may be carried out by an individual to prevent harm or intervene when there is a risk of domestic violence, dating violence, sexual assault, or stalking against a person other than the bystander;
- Provides information on risk reduction so that students and employees may recognize warning signs of abusive behavior and how to minimize the risk of potential attacks;
- Provides an overview of information contained in the Annual Security Report in compliance with the Clery Act.

The University has developed an annual educational campaign consisting of presentations that include distribution of educational materials to new students; participating in and presenting information and materials during new employee orientation; presenting programs throughout the year on at least a quarterly basis, including sessions such as:

- Programs and speakers are presented on topics such as healthy relationships, sexual and gender violence.
- Campus training and inclusion of various resources:
 - Gender Equity Center website:
—<http://studentaffairs.psu.edu/genderequity>
 - Campus Counseling Websites:
—<http://beaver.psu.edu/counseling>

Sex Offender Registration — Campus Sex Crimes Prevention Act

Megan's Law

Members of the general public may request community notification fliers for information concerning sexually violent predators in a particular community by visiting the chief law enforcement officer in that community. In jurisdictions where the Pennsylvania State Police is the primary law enforcement agency, members of the general public may make such requests at the local Pennsylvania State Police Station in that community. This information is also available on the Pennsylvania State Police "Megan's Law" website <http://www.pameganslaw.state.pa.us>.

CAMPUS SECURITY POLICIES; CRIME PREVENTION AND SAFETY AWARENESS PROGRAMS

Penn State believes that safety is everyone's responsibility. In an effort to provide our students, faculty, staff and community with information about the campus security procedures and practices and with the tools that they need to help to keep themselves and others safe, University Police and Public Safety and its University partners provide a variety of educational programs on topics such as, sexual assault awareness, domestic/relationship violence, stalking, drugs and alcohol awareness, and theft prevention. All programs are offered to students, faculty, and staff as requested and most are offered on an annual basis. Some of the available programs are outlined below following information on certain campus safety policies and procedures. If you or your organization would like to request a specific program, please visit police.psu.edu/community-education.

Behavioral Threat Management Team

In order to enhance emergency preparedness and prevention efforts, Penn State has established a Behavioral Threat Management Team (BTMT). The objective of the BTMT is to systematically identify, evaluate, and manage potentially threatening situations, including persons of concern, at the University. The multidisciplinary team is composed of people from across the University.

In addition to the BTMT at the University Park campus, each Commonwealth campus also has a team responsible for managing concerning situations on their campuses. While the Commonwealth campus BTMTs may consult with the University Park team at any time, more serious and complex cases are managed in consultation with the University Park BTMT.

If you would like further information about the BTMT, please visit the Behavioral Threat Management website at <http://btmt.psu.edu>.

Weapons Policy

The possession, carrying, and use of weapons, ammunition, or explosives is prohibited on University-owned or -controlled property.

The only exception to this policy is for authorized law enforcement officers or others, specifically authorized by the University. At some campuses, University Police provide storage for personal weapons of students. Failure to comply with the University weapons policy will result in disciplinary action against violators.

Pennsylvania Crime Victim Rights

Your Rights as a Crime Victim:

As a victim of crime in the Commonwealth of Pennsylvania, you have rights. Also, you can expect to receive information, practical and emotional support, and be able to participate in the criminal justice process. These standards were created to make sure that you are treated with dignity and respect at all times, regardless of your gender, age, marital status, race, ethnic origin, sexual orientation, disability, or religion.

You have the right to be told...

- About basic services available to you in your county
- About certain court events, including information on bail, escape of offender, release of an offender
- About the details of the final disposition of a case

You have the right to receive...

- Notice of the arrest of the offender
- Information about restitution and assistance with compensation
- Accompaniment to all criminal proceedings by a family member, a victim advocate, or a support person

You have the right to provide input...

- Into the sentencing decision and to receive help in preparing an oral and/or written victim impact statement
- Into post-sentencing decisions

Please see the resource list for local victim assistance options.

For more information about your detailed rights or to file a complaint if you believe your rights have been violated, please contact: The Pennsylvania Crime Victims Office at <http://pcv.pccd.pa.gov/Pages/default.aspx#.VaaMafn17OQ>.

*Source: Pennsylvania Crime Victims (2015). "Your Rights as a Victim" at <http://pcv.pccd.pa.gov/for-victims/Pages/Your-Rights-as-a-Victim.aspx#.VaaNivn17OQ>.

Student Conduct

The Office of Student Conduct

The Office of Student Conduct strives to deliver a conduct process that is equitable, just, educational, effective and expeditious; and to provide a system that promotes individual and organizational growth through responsibility and in which the success of its educational endeavors is characterized by increased civility.

The Student Code of Conduct

The Office of Student Conduct is responsible for administering the Code of Conduct, which articulates the behavioral standards and the equitable procedures employed by the University to respond to allegations of student or organizational misconduct.

The Code of Conduct is administered at all Penn State campuses on University property (excluding the Law School) and may also address off-campus student or organizational misconduct when a student's or organization's behavior affects a substantial university interest.

Students or organizations who are found responsible for violations may be subject to sanctions ranging from Conduct Conversation or Conduct Probation to Suspension or Expulsion from the University. Students or organizations residing in University housing may also lose the privilege of living on campus.

In most cases, the Office of Student Conduct will also assign developmental and educational interventions designed to promote greater awareness and improved decision making for students or organizations and to deter future misconduct.

The University will, upon written request, disclose to an alleged victim of a crime of violence or non-forcible sexual assault the outcome of the conduct process in writing. Written request is not required, however, from an alleged victim of, domestic violence, dating violence, sexual assault, or stalking. If the alleged victim is deceased as a result of such crime or offense, the next of kin of such victim shall be treated as an alleged victim for purposes of this paragraph.

In instances where a student's or organization's conduct, behavior, or other objective evidence provides a reasonable cause to believe a student or organization is an immediate and significant threat to the health or safety of other persons, to property of the University or others, to disrupting essential campus operations, or to the student's own health or safety, the Office of Student Conduct may assign an Interim Suspension and/or other interim actions that are designed to protect the health and safety of the community and members therein.

The Office of Student Conduct is also responsible for conducting pre-admission, re-enrollment, and continuing enrollment reviews for prospective, returning or current students with known behavioral problems. Any individual or entity may submit reports alleging student misconduct to the Office of Student Conduct or the OSC designee at the campus where the incident occurred.

The Office of Student Conduct also provides outreach programming designed to inform and educate students and to promote the Penn State Principles. Please visit the Office of Student Conduct website at <http://studentaffairs.psu.edu/conduct>, where you can find the Student Code of Conduct, Parental Notification Policy, Student Records Policy, and links to all policy and procedural guidelines related to the Student Conduct process. Students are encouraged to take the "Know the Code" quiz located on the Student Conduct website.

Additional Information Regarding the Student Code of Conduct

The Pennsylvania State University is obligated to provide all students and organizations with the University regulations, policies, and procedures governing student and organization conduct. Penn State policies and procedures, including the Code of Conduct and the Off-Campus Misconduct Policy, are published on the Student Conduct website, <http://studentaffairs.psu.edu/conduct>.

If you have additional questions, special needs, or wish to request a hard copy of this information, please contact the Office of Student Conduct at Penn State Beaver.

Parental Notification Policy

The University reserves the right to report student conduct information to the parents or legal guardians of students.

Federal legislation authorizes Penn State to disclose conduct records concerning violations of the University's rules and regulations governing the use or possession of alcohol or controlled substances that involve students who are under the age of 21, regardless of whether the student is a dependent.

The University may also report non-alcohol or drug-related incidents to parents or legal guardians of dependent students under

circumstances described in the Student Guide to General University Policy and Rules. See the following website for the University Code of Conduct and additional information concerning Parental Notification: <https://studentaffairs.psu.edu/support-safety-conduct/student-conduct/conduct-information-parents-families>.

Missing Student Policy

Effective August 14, 2008, the Higher Education Opportunity Act of 2008 requires any institution participating in a Title IV federal student financial aid program that maintains on campus housing facilities to establish a missing student notification policy and related procedures (20 USC 1092(j) Section 488 of the Higher Education Opportunity Act of 2008) for students living in on campus housing. The following policy and related procedures is Penn State University's official Missing Student Policy.

DEFINITIONS:

Student – The University defines a student as any person enrolled in any class or program of the University, full or part time.

Emancipated Individual – A person less than 18 years of age who has been declared by a court to be independent of his or her parents.

AVP – For this policy, “AVP” refers to an Assistant Vice President for Student Affairs assigned to respond to student emergencies.

POLICY:

The Pennsylvania State University will provide every student living in on campus student housing the opportunity and means to identify a missing student contact to be used in the event the student is reported missing. Missing student contact information will be registered confidentially and will be accessible only to authorized University officials and may not be disclosed except to law enforcement personnel in furtherance of a missing person investigation.

In accordance with the procedures established within this policy, within 24 hours after a student living in on campus student housing has been reported missing and the student is not known to have returned to the University or otherwise been located, the AVP or his/her designee will notify the individual the student has designated as his/her missing person contact. If the missing student is under 18 years of age and not an emancipated individual, the AVP or his/her designee will also notify the student's custodial parent or guardian.

Students will be notified annually that each residential student of the University has the option to confidentially designate an individual to be contacted by the Penn State administration no later than 24 hours after the time that it is determined the student is missing. Penn State provides each student with the means and opportunity to register their confidential missing student contact information by logging into the University's LionPATH system and filling out the Address and Contact Information. This confidential missing student contact can be anyone. This option is provided to students even if a student has already registered an individual as a general emergency contact. The student also has the option to identify the same individual for both their general emergency contact and missing student contact.

University Police shall investigate all reports of missing students and will notify and cooperate with other law enforcement agencies, as necessary, to further the investigation.

PROCEDURES:

Any individual who believes a student living in on campus student housing may be missing should immediately contact University Police. University Police may notify the AVP upon receipt of a missing student report. When receiving such report, both the AVP and University Police will attempt to determine whether the student is, in fact, missing. Among other steps that may be taken depending on the circumstances:

- AVP or his/her designee will attempt to contact the student through all reasonable and available means.
- University Police will investigate the validity of the missing person report and manage the information according to its established investigative standards.
- University Police may notify appropriate University personnel and seek their aid in the investigation (e.g. Student Affairs, Residence Life, Counseling and Psychological Services, etc.)
- University Police will notify local law enforcement agencies within 24 hours of the determination that the student is missing, unless the local law enforcement agency was the entity that made the determination that the student is missing.

If, within 24 hours of the report, University Police is unable to locate the missing student and the student is not known to have returned to the University or otherwise located, University Police will notify the AVP and he/she or his/her designee will take the following action(s):

- The AVP or his/her designee will promptly notify the individual the student has designated as his/her missing person contact and document the date and time of the notification.
- If the missing student is under 18 years of age and not an emancipated individual, the AVP or his/her designee will also notify the student's custodial parent or guardian and document the date and time of the notification.

University Police and the AVP will coordinate their efforts to locate the missing student. The AVP will notify the Vice President of Student Affairs and update him/her on the status of the investigation as appropriate.

When the missing student is located, the AVP or his/her designee will contact the student to offer any appropriate support, as well as the emergency contacts and/or parents to confirm the student has been located.

If the initial investigation is unsuccessful in locating the missing student, University Police will continue to investigate according to established police procedures. The AVP will decide what further action, if any, should be taken by the Office of Student Affairs.

FURTHER INFORMATION:

While this policy applies only to students living in on campus student housing, reports of students missing from off-campus residences will be referred to the police department having jurisdiction over the student's local residence, if known, or the student's permanent residence if a local residence cannot be determined, and the University will cooperate within its legal limitations with any subsequent investigation.

The Missing Student Policy, SY42, can be found at: <https://policy.psu.edu/policies/sy42>

UNIVERSITY CONTACT FOR MISSING STUDENTS

Penn State Beaver
Director of Student Affairs
113 Student Union Building
Monaca, PA 15061
724-773-3957

University Police and Public Safety
100 University Drive
Monaca, PA 15061
724-773-3888

Daily Crime and Fire Log

University Police and Public Safety (UPPS) maintains a combined Daily Crime, fire, and valid complaint log of all incidents reported to them. Each day a log is published which identifies the type, general location, date and time reported, date and time occurred and current disposition if known of each incident reported to UPPS. Local news media may contact UPPS to acquire information from this log. Information deemed newsworthy may be published by the news media.

The Daily Log for the most current sixty days is available for viewing during regular business hours at the University Police and Public Safety office on campus. Any portion of the Daily Log for incidents older than 60 days will be made available for public inspection within two business days of a request.

Crime Prevention and Safety Awareness Programs

In an effort to promote safety awareness, the Penn State Beaver University Police and Public Safety Department participate in a variety of programs to educate and inform students, employees, parents, and the community at large on a variety of issues. The programs are presented upon request or are scheduled at various times and locations on or near the campus. If you or your organization would like to request a specific program, please contact the University Police and Public Safety at 724-773-3888. Below are some of the programs and services available, and that are all provided at least once a semester to students, as well as faculty and staff upon request.

Penn State SAFE (Student Alcohol Feedback and Education)

Penn State SAFE is an on-line alcohol education program that uses evidence-based strategies to educate students about alcohol and its effects on the body. All first-year students who are 21 or younger at all Penn State campuses are required to complete the program prior to matriculation. *Fall 2017–Spring 2018: 142 students completed the program during the implementation period.*

Penn State AWARE (Sexual Assault Education)

Penn State AWARE is an online sexual violence education program. All first-year students, regardless of age are required to complete the program prior to matriculation. The program educates students about sexual assault and sexual harassment. The program helps students develop practical skills to keep themselves and their friends safe. *Fall 2017–Spring 2018: 133 students completed the program during the implementation period.*

Pizza and Police

University Police will do presentations regarding certain topics including:

- Alcohol Awareness
- StaySAFE Program
- Identity Theft/Internet Security
- Date Rape Drugs
- Drunk Driving

Engraving

University Police provide engraving tools and instruction to persons interested in marking and identifying valuable items.

New Resident Assistant Training

University Police present information about police, common drugs of abuse, alcohol, and crime prevention to new resident assistants each year.

CSI Camp

University Police assist with teaching children basic information about law enforcement and crime scene investigation and attempt to explain the differences between the television show CSI and real life CSI.

Alcohol Awareness Program

University Police provide alcohol awareness programs.

R.A.D. Basic Physical Defense Program

University Police offer the R.A.D. Basic Physical Defense Program. The program is a comprehensive, women-only course that begins with awareness, prevention, risk reduction and risk avoidance, while progressing on to the basics of hands-on defense training. It includes lecture, discussion and self defense techniques, suitable for women of all ages and abilities.

StaySAFE: Surviving an Active Shooter Program

Creates awareness and provides people with instructions and options in case an active shooter was to ever open fire on campus.

Drug Dog Presentation

In collaboration with local police, a presentation is given to students regarding the training and purpose of a K9 officer in the different aspects of law enforcement. The usefulness of a K9 on a college campus is also discussed.

PROGRAMS CONDUCTED BY UNIVERSITY POLICE AND PUBLIC SAFETY (3 MOST RECENT YEARS)

2015: **12**

2016: **12**

2017: **11**

PENN STATE UNIVERSITY POLICIES GOVERNING ALCOHOL AND OTHER DRUGS

Penn State's Alcohol and Drug Policy

Federal law requires Penn State to notify all faculty, staff, and students of certain information pertaining to the unlawful possession, use, or distribution of illicit drugs and alcohol on its property or as part of its activities. The information included in this report complies with the notification requirements of the Drug-Free Schools and Communities Act and its implementing regulations.

The possession, use, distribution and sale of alcoholic beverages is prohibited upon the property of The Pennsylvania University unless specifically authorized in accordance with Policy AD18, Possession, Use and Distribution of Alcoholic Beverages (<https://policy.psu.edu/>)

policies/ad18). Where such possession, use, distribution and/ or sale is authorized, strict compliance with the laws of the Commonwealth of Pennsylvania is required.

AD18 includes information about how a sponsoring academic or administrative department, group or unit may seek permission to have alcoholic beverages at a University-sponsored event. The University's Authorizing Officials are 1) the University Risk Officer (for University Park requests); 2) the Senior Vice President for Health Affairs and Dean of the College of Medicine; and 3) the Chancellor of Commonwealth campus (for campus requests).

AD18 specifies that the following parameters apply to any event occurring on University property or at any University-sponsored event occurring at another location: 1) persons under the age of 21 years may not purchase, consume, possess or be served alcoholic beverages. It is the responsibility of the person(s) distributing alcoholic beverages to determine the age of the recipient; 2) no alcoholic beverages may be furnished to a person who appears to be intoxicated; 3) non-alcoholic beverage alternatives must be available at all events; 4) alcoholic beverages should not be served or ordered prior to 3:00 pm on a business day (Monday-Friday).

For students, the possession or use of alcoholic beverages is prohibited in any Penn State on-campus undergraduate residence hall building regardless of age. At University Park, this includes Nittany Apartments and Eastview Terrace. Students residing in White Course Apartments are allowed to possess and consume alcoholic beverages in accordance with the laws of the Commonwealth of Pennsylvania. In White Course Apartments, alcoholic beverage consumption is restricted to the inside of apartments, not in common areas, lounges, or outside.

Policies Specific to Faculty and Staff

As a condition of University employment, every employee shall abide by the terms of this policy. Any employee who violates this policy is subject to Penn State sanctions, including dismissal, as well as criminal sanctions provided by federal, state, or local law. An employee may be required to participate in a drug abuse or drug rehabilitation program. An employee must notify his or her supervisor of any criminal drug conviction for a violation occurring in the University workplace no later than five (5) days after such conviction. Please consult Policy AD33, A Drug-Free Workplace for more information (<https://policy.psu.edu/policies/ad33>.)

Policies Specific to Penn State Students

Any student who violates this policy is subject to disciplinary action including sanctions as outlined in the Student Code of Conduct in addition to any penalties resulting from violating local, state, and/or federal law. Disciplinary sanctions may include: Students who are found responsible for violations may be subject to sanctions ranging from Disciplinary Warning or Disciplinary Probation to Suspension or Expulsion from the University. Students residing in University housing may also lose the privilege of living on campus for violating University rules and regulations or conditions of the housing contract. In most cases, the Office of Student Conduct will also assign developmental and educational interventions designed to promote greater awareness and improved decision making for students and to further deter future misconduct.

Residence Life Alcohol Policy

Alcohol And Illegal Substances

ALCOHOL POLICY

The possession or use of alcoholic beverages is prohibited in all Penn State on-campus undergraduate residence hall buildings. It is a violation of state law and University policy for a student under 21 years of age to attempt to purchase, consume, possess, or transport alcoholic beverages. It is unlawful to sell, furnish, and give alcoholic beverages or to permit alcoholic beverages to be sold, furnished, or given to any minor.

Residents will be held responsible for activities that occur in their rooms and will be referred to the Office of Residence Life, the Office of Student Conduct, and/or University Police if guests are violating the on-campus alcohol policies listed above.

Failure to comply with the direction or to present identification to a University official acting in the performance of his/her duties is a violation of the Student Code of Conduct and will result in a referral to the Office of Residence Life or the Office of Student Conduct.

It is against the Student Code of Conduct to supply false information, such as name, age, etc., to University officials who are acting in the performance of their duties.

ILLEGAL SUBSTANCES (DRUGS)

It is a violation of state law and University policy to illegally possess, use, distribute, manufacture, sell, or be under the influence of illegal drugs. Students who violate this policy will be referred to the Office of Residence Life, the Office of Student Conduct, and/or University Police.

It is against residence hall policy for a student to be in a residential area (room, common area, common building, building entryway, or quad area immediately adjacent to the residence halls) and in the presence of an illegal substance. Students who are in the presence of an illegal substance in these areas will be referred to the Office of Residence Life, the Office of Student Conduct and/or University Police.

Alcohol Poisoning is a Medical Emergency.

Call for help. You could save someone's life.

ON-CAMPUS: 773-3888 • OFF-CAMPUS: 911

Know the signs:

- Passed out or difficult to wake
- Cold, clammy, pale, or bluish skin
- Slowed breathing
- Vomiting while asleep or awake

Know how to help:

- Turn a vomiting person on his or her side to prevent choking
- Clear vomit from the mouth
- Keep the person awake
- NEVER leave the person unattended



Pennsylvania Alcohol-Related Offenses

Pennsylvania's Medical Amnesty Law

If an individual who is under 21, in good faith, calls and believes they are the first to call 911, police, ambulance or campus security, gives their name and stays with the person to prevent that person's death or serious injury, the caller is immune from prosecution for consumption or possession of alcohol.

Penn State's Responsible Action Protocol

A student who acts responsibly by notifying the appropriate authorities (e.g., calling 911, alerting a resident assistance, contacting police) AND meets one or more of the following criteria typically will not face University conduct action for his or her own use or possession of alcohol or drugs. However, the student will be required to attend an approved alcohol or drug education program, such as BASICS or the Marijuana Intervention Program (MIP); the fee will be waived. When the student's behavior involves other Code of Conduct violations, (e.g., vandalism, assault, furnishing to minors) the additional behavior may be subject to disciplinary action. If a student exhibits a pattern of problematic behavior with alcohol or drugs, that student may be subject to formal disciplinary action.

The criteria which invoke the Protocol are:

- A student seeks medical assistance *for himself or herself* when experiencing an alcohol or drug overdose or related problems.
- A student seeks medical assistance *for a peer* suffering from an alcohol or drug overdose or related problems.
- A student suffering from an alcohol or drug overdose or related problems, *for whom another student seeks assistance* also will not be subject to disciplinary action for alcohol violations.

Underage Drinking

It is illegal for anyone under 21 years of age to attempt to purchase, consume, possess, or knowingly and intentionally transport any liquor, malt, or brewed beverage. It is also illegal to lie about age to obtain alcohol and to carry a false identification card.

Penalty	1st Offense	2nd Offense	Subsequent Offense
Fine	0–\$500	0–\$1,000	0–\$1,000
Jail	0–90 days	0–90 days	0–90 days
License Suspension	at least 90 days	at least 1 year	at least 2 years

By law, the local police department and University Police are required to notify parents or guardians of all underage-drinking violations.

Penn State University has a zero-tolerance policy associated with students consuming beverage alcohol under the age of 21. Not only is this against the Pennsylvania law, it is also a violation of the Student Code of Conduct.

Carrying False I.D.

It is illegal for anyone under 21 to possess an identification card falsely identifying that person by name, age, date of birth, or photograph as being 21 or older to attempt to obtain liquor, malt, or brewed beverage by using the identification card of another or by using an identification card that has not been lawfully issued to or in the name of the person who possesses the card.

Penalty	1st Offense	2nd Offense	Subsequent Offense
Fine	0–\$300	0–\$500	0–\$500
Jail	0–90 days	0–1 year	0–1 year
License Suspension	at least 90 days	at least 1 year	at least 2 years

Effective fall 2018, Penn State University is tobacco and smoke free across all campuses. The use of cigarettes, e-cigarettes, cigars, pipes, smokeless tobacco, all nicotine delivery devices and other tobacco products is prohibited across all University-owned or leased properties, facilities and vehicles. Please consult Policy AD32, Smoking Policy and Guideline (<https://policy.psu.edu/policies/ad32>) for more information.

Public Drunkenness

It is illegal to appear in any public place manifestly under the influence of alcohol to the degree that you may endanger yourself or other persons or property, or annoy others in your vicinity.

Public drunkenness is a crime when a person appears in any public place manifestly under the influence of alcohol or a controlled substance to the degree that he may endanger himself or other persons or property, or annoy persons in his vicinity.

Public drunkenness also leads to other behaviors and important health concerns. Often, public drunkenness contributes to many criminal mischiefs and disorderly conducts on campus. People must be responsible for their own actions and know their limits and tolerance levels before consuming alcohol.

Penalty	1st Offense	2nd Offense	Subsequent Offense
Fine	0–\$500	0–\$1,000	0–\$1,000
Jail	0–90 days	0–90 days	0–90 days

Driving Under the Influence (DUI) Law

In Pennsylvania, the illegal level for DUI is .08 percent Blood Alcohol Content (BAC) and .02 percent BAC for minors. The law emphasizes treatment and a three-tier penalty system based on BAC and prior offenses: (1) general impairment (.08-.099 percent), (2) high rate of alcohol (.10-.159 percent), and (3) highest rate of alcohol (.16 percent and above).

Also, drivers with any amount of a Schedule I, II, or III controlled substance not medically prescribed (or their metabolites) may not drive, operate, or be in actual physical control of a vehicle.

It is illegal for anyone under 21 years of age to drive a vehicle with a blood alcohol content of .02 percent or higher. A first-time offense individual, under certain circumstances, may qualify for an Accelerated Rehabilitative Disposition (ARD) program.

Penalty ¹	1st Offense	2nd Offense	3rd Offense
Fine	\$500–\$5,000	\$750–\$5,000	\$1,500–\$10,000
Jail	2 days–6 months	30 days–6 months	90 days–5 years
License Suspension	1 year	1 year	18 months
Other	Alcohol Highway Safety School Court Reporting Network file	Alcohol Highway Safety School Court Reporting Network file	Drug & Alcohol Evaluation Court Reporting Network file

Selling or Furnishing Alcohol to Minors

Penalty	1st Offense	2nd and Subsequent Offenses
Fine	\$1,000–\$2,500	\$2,500
Jail	0–1 year	0–1 year

For more information about all alcohol-related offenses and resources in Pennsylvania, see www.lcb.state.pa.us/.

Open Container Law

In Pennsylvania, there is no state law to prohibit open containers of alcohol in public. However, many local governments have enacted such ordinances. For more information about all alcohol-related offenses in Pennsylvania, see www.lcb.state.pa.us.

Related Drug Offenses

Possession of Marijuana

It is unlawful for a person to knowingly or intentionally possess marijuana (Hashish), a Schedule I substance.

Persons engaged in such activity will most likely be faced with criminal charges and charged with a violation of the Student Code of Conduct.

The charges for marijuana possession include:

Quantity	Charge	Jail Time	Fine
30 grams or less	Misdemeanor	30 days	0–\$500
Over 30 grams	Misdemeanor	1 year	0–\$5,000

Pennsylvania's Medical Marijuana Act

Pennsylvania's Medical Marijuana Act went into effect on May 17, 2016. However, marijuana in any form remains a prohibited controlled substance under federal law, and therefore the possession, cultivation, and use by individuals remain illegal under federal law. The Pennsylvania Medical Marijuana Act conflicts with federal criminal laws governing controlled substances, as well as federal laws requiring institutions receiving federal funds, by grant or contract, to maintain drug-free campuses and workplaces. Penn State receives federal funding that would be in jeopardy if those federal laws did not take precedence over state law. Therefore, the use and/or possession by individuals of marijuana in any form and for any purpose continues to violate applicable University policies, and any student or employee who violates such policies will be subject to disciplinary sanctions.

Possession of Other Drugs

In Pennsylvania, the penalties for being convicted of possession of a controlled substance such as heroin, cocaine, methamphetamines, prescriptions, ecstasy, and LSD vary by type of substance and quantity of the substance possessed. Charges also vary by first, second and subsequent offenses. Charges may include jail time, fines, drug counseling, and suspension of driver's license.

Possession of Drug Paraphernalia

It is unlawful for a person to use or possess, with the intent to use, drug paraphernalia that is used for packaging, manufacturing, injecting, ingesting, inhaling, or otherwise introducing into the human body a controlled substance.

Synthetic Marijuana

Effective March 1, 2011, the U.S. Drug Enforcement Agency classified synthetic marijuana as an illegal substance. It is also known as Spice, K2, Demon, Wicked, Black Magic, Voodoo Spice, and Ninja Aroma Plus. Individuals found responsible for manufacturing, possessing, importing/exporting, or distributing these substances will face criminal and civil penalties. Penn State students engaging in these activities will also be held responsible under the University's illegal substances policy. It is also against University policy to use synthetic marijuana.

¹ Penalties differ based on age, blood alcohol content, and other factors.

Controlled Substances Act (CSA) — The CSA places all substances that are regulated under existing federal law into one of five schedules. The place is based on the substance’s medical use, potential for abuse, and safety or dependence ability. Below is a description of the five schedules and examples of drugs in each schedule. The list is not comprehensive.

Schedule	Characteristics	Examples
Schedule I	<ul style="list-style-type: none"> high potential for abuse no currently accepted medical use in US lack of accepted safety for use under medical supervision 	<ul style="list-style-type: none"> Heroin Gamma Hydroxybutyric Acid (GHB) LSD Marijuana MDMA (Ecstasy) Mescaline (peyote) Psilocybin/Psilocyn (mushrooms) Tetrahydrocannabinols (THC)
Schedule II	<ul style="list-style-type: none"> high potential for abuse currently accepted for medical use or with severe restrictions in US abuse may lead to severe psychological or physical dependence 	<ul style="list-style-type: none"> Adderall® Amphetamine Cocaine Fentanyl Hydrocodone Methadone Methamphetamine Morphine Oxycodone Phencyclidine (PCP) Ritalin®
Schedule III	<ul style="list-style-type: none"> less potential for abuse than drugs in Schedules I and II currently accepted for medical use in US abuse may lead to moderate or low physical dependence or high psychological dependence 	<ul style="list-style-type: none"> Anabolic Steroids Codeine compounds Some barbiturates Ketamine
Schedule IV	<ul style="list-style-type: none"> low potential for abuse compared to drugs in Schedule III currently accepted medical use in US abuse may lead to limited physical dependence or psychological dependence 	<ul style="list-style-type: none"> Ativan® Rohypnol® (not manufactured or legally marketed in the US) Valium® Xanax®
Schedule V	<ul style="list-style-type: none"> low potential for abuse compared to drugs in Schedule IV currently accepted medical use in US abuse may lead to limited physical dependence or psychological dependence 	<ul style="list-style-type: none"> Cough medicines with codeine

Source: U.S. Department of Justice. (2017). *Drugs of Abuse*. Washington, DC: U.S. Government Printing Office. Retrieved from <http://www.justice.gov/>.

Federal Tracking Penalties — Marijuana

Drug	Quantity	1st Offense	2nd Offense*
Marijuana (Schedule I)	1,000 kg or more mixture; or 1,000 or more plants	<ul style="list-style-type: none"> Not less than 10 yrs, not more than life If death or serious injury, not less than 20 yrs, not more than life Fine not more than \$10 million if an individual, \$50 million if other than an individual 	<ul style="list-style-type: none"> Not less than 20 yrs, not more than life If death or serious injury, mandatory life Fine not more than \$20 million if an individual, \$75 million if other than an individual
Marijuana (Schedule I)	100 kg to 999 kg mixture; or 100 to 999 plants	<ul style="list-style-type: none"> Not less than 5 yrs, not more than 40 yrs If death or serious injury, not less than 20 yrs, not more than life Fine not more than \$5 million if an individual, \$25 million if other than an individual 	<ul style="list-style-type: none"> Not less than 10 years, not more than life If death or serious injury, mandatory life Fine not more than \$8 million if an individual, \$50 million if other than an individual
Marijuana (Schedule I)	More than 10 kgs hashish; 50 to 99 kg mixture More than 1 kg of hashish oil; 50 to 99 plants	<ul style="list-style-type: none"> Not more than 20 yrs If death or serious injury, not less than 20 yrs, not more than life Fine \$1 million if an individual, \$5 million if other than an individual 	<ul style="list-style-type: none"> Not more than 30 years If death or serious injury, mandatory life Fine \$2 million if an individual, \$10 million if other than individual
Marijuana (Schedule I)	1 to 49 plants; less than 50 kg	<ul style="list-style-type: none"> Not more than 5 years Fine not more than \$250,000, \$1 million other than individual 	<ul style="list-style-type: none"> Not more than 10 years Fine \$500,000 if an individual, \$2 million if other than individual
Hashish (Schedule I)	10 kg or less		
Hashish Oil (Schedule I)	1 kg or less		

*The minimum sentence for a violation after two or more prior convictions for a felony drug offense have become final is a mandatory term of life imprisonment without release and a fine up to \$8 million if an individual and \$20 million if other than an individual.

Source: U.S. Department of Justice. (2017). *Drugs of Abuse*. Washington, DC: U.S. Government Printing Office. Retrieved from <http://www.justice.gov/>.

Federal Tracking Penalties

Drug Schedule	Quantity	Penalties	Quantity	Penalties
Cocaine (Schedule II)	500–4999 gms mixture	<p>First Offense: Not less than 5 yrs, and not more than 40 yrs. If death or serious injury, not less than 20 or more than life. Fine of not more than \$5 million if an individual, \$25 million if not an individual.</p> <p>Second Offense: Not less than 10 yrs, and not more than life. If death or serious injury, life imprisonment. Fine of not more than \$8 million if an individual, \$50 million if not an individual</p>	5 kgs or more mixture	<p>First Offense: Not less than 10 yrs, and not more than life. If death or serious injury, not less than 20 or more than life. Fine of not more than \$10 million if an individual, \$50 million if not an individual.</p> <p>Second Offense: Not less than 20 yrs, and not more than life. If death or serious injury, life imprisonment. Fine of not more than \$20 million if an individual, \$75 million if not an individual.</p> <p>2 or More Prior Offenses: Life imprisonment. Fine of not more than \$20 million if an individual, \$75 million if not an individual.</p>
Cocaine Base (Schedule II)	28–279 gms mixture		280 gms or more mixture	
Fentanyl (Schedule II)	40–399 gms mixture		400 gms or more mixture	
Fentanyl Analogue (Schedule I)	10–99 gms mixture		100 gms or more mixture	
Heroin (Schedule I)	100–999 gms mixture		1 kg or more mixture	
LSD (Schedule I)	1–9 gms mixture		10 gms or more mixture	
Methamphetamine (Schedule II)	5–49 gms pure or 50–499 gms mixture		50 gms or more pure or 500 gms or more mixture	
PCP (Schedule II)	10–99 gms pure or 100–999 gms mixture		100 gm or more pure or 1 kg or more mixture	
Penalties				
Other Schedule I & II drugs (and any drug product containing Gamma Hydroxybutric Acid)	Any amount	<p>First Offense: Not more than 20 yrs. If death or serious injury, not less than 20 years, or more than life. Fine \$1 million if an individual, \$5 million if not an individual.</p> <p>Second Offense: Not more than 30 yrs. If death or serious injury, life imprisonment. Fine \$2 million if an individual, \$10 million if not an individual.</p>		
Flunitrazepam (Schedule IV)	1 gm			
Other Schedule III drugs	Any amount	<p>First Offense: Not more than 10 yrs. If death or serious injury, not more than 15 yrs. Fine not more than \$500,000 if an individual, \$2.5 million if not an individual.</p> <p>Second Offense: Not more than 20 yrs. If death or serious injury, not more than 30 yrs. Fine not more than \$1 million if an individual, \$5 million if not an individual.</p>		
All other Schedule IV drugs	Any amount			
Flunitrazepam (Schedule IV)	Other than 1 gm or more	<p>First Offense: Not more than 5 years. Fine not more than \$250,000 if an individual, \$1 million if not an individual.</p> <p>Second Offense: Not more than 10 yrs. Fine not more than \$500,000 if an individual, \$2 million if not an individual.</p>		
All Schedule V drugs	Any amount			

Source: U.S. Department of Justice. (2017). *Drugs of Abuse*. Washington, DC: U.S. Government Printing Office. Retrieved from <http://www.justice.gov/>.

Harmful Effects of Mixing Various Drugs with Alcohol

DRUG	EFFECTS WHEN MIXED WITH ALCOHOL
Antibiotics	Extreme drowsiness, decreases effectiveness
Antihistamines	Extreme drowsiness, causes temporary depression
Aspirin	Stomach and intestinal bleeding
High Blood Pressure Medicines	Dangerously lower blood pressure
Narcotics	Extreme slowing of brain activities, breathing slows down or stops
Non-Narcotic Pain Killers	Stomach and intestinal irritation or bleeding
Sedatives & Tranquilizers	Extreme slowing of brain activities, breathing slows down or stops, heart slows down or stops

Turrisi, R. (2010). *A parent handbook for talking with college students about alcohol*. The Pennsylvania State University, University Park, PA.

Drug Risks and Consequences

	EFFECT ON THE MIND	EFFECT ON THE BODY	OVERDOSE	POTENTIAL FOR DEPENDENCE	EXAMPLES
ALCOHOL	Impairs coordination, judgment, reasoning, and memory.	Slurred speech, loss of motor coordination, weakness, headache, lightheadedness, blurred vision, dizziness, nausea, vomiting, low blood pressure, and slowed breathing.	Mental confusion, stupor, coma, or inability to wake up, vomiting, seizures, slow breathing (fewer than 8 breaths per minute), irregular breathing (10 seconds or more between breaths), hypothermia (low body temperature), bluish skin color, paleness.	Yes	Types: Beer, wine, liquor
DEPRESSANTS	Impairs memory, judgment, coordination, and can cause confusion; may induce sleep, relieve anxiety and muscle spasms, and prevent seizures.	Slurred speech, loss of motor coordination, weakness, headache, lightheadedness, blurred vision, dizziness, nausea, vomiting, low blood pressure, and slowed breathing.	Shallow respiration, clammy skin, dilated pupils, weak and rapid pulse, coma, and possible death.	Yes	Rx: Valium, Xanax, Halcion, Ativan, Klonopin, Restoril, Lunesta, Ambien, and Sonata Non-Rx: Rohypnol (Roofies)
HALLUCINOGENS	Distortions of thought associated with time and space, confusion, anxiety, depression, paranoia, sleep problems, and drug craving.	Elevated heart rate, increased blood pressure, sweating, loss of appetite, tremors, sleeplessness, dilated pupils, impaired motor coordination.	Respiratory depression, coma, convulsions, seizures, and death due to respiratory arrest. LSD and shrooms: death due to suicide, accidents, and dangerous behavior.	Yes	Rx: N/A Non-Rx: MDMA, ecstasy, LSD, acid, shrooms, PCP, ketamine
INHALANTS	Damages area of the brain responsible for thinking, moving, seeing, and hearing. Cognitive abnormalities range from mild impairment to severe dementia.	Slurred speech, loss of motor coordination, euphoria, Slowed bodily functions, slight stimulation, loss of inhibition, loss of consciousness.	Loss of consciousness and/or death, "Sudden sniffing death," Asphyxiation.	Yes	Names/Forms: Huff, Whippets, butane, aerosols
MARIJUANA	Problems with memory and learning, distorted perception, difficulty in thinking and problem-solving, and loss of coordination.	Sedation, bloodshot eyes, increased heart rate, coughing from lung irritation, increased appetite, and decreased blood pressure.	No deaths from overdose of marijuana have been reported.	Yes	Names/Forms: cannabis, weed, hash, 710 (oil), wax, budder, shatter
OPIOIDS	When appropriately prescribed reduce tension and pain, anxiety, and aggression. Unwanted effects include drowsiness, inability to concentrate, and apathy.	Slowed physical activity, constriction of the pupils, flushing of the face and neck, constipation, nausea, vomiting, and slowed breathing.	Constricted (pinpoint) pupils, cold clammy skin, confusion, convulsions, extreme drowsiness, slowed breathing, coma, and respiratory failure.	Yes	Rx: OxyContin, Vicodin, codeine, morphine, methadone, and fentanyl Non-Rx: Heroin
STIMULANTS	Produce a sense of exhilaration, enhance self-esteem, improve mental and physical performance, increase activity, reduce appetite, extend wakefulness for prolonged period, and "get high". Chronic, high-dose use results in agitation, hostility, panic, aggression, and suicidal or homicidal tendencies. Paranoia may also occur.	Dizziness, tremors, headache, flushed skin, chest pain with palpitations, excessive sweating, vomiting, and abdominal cramps.	High fever, convulsions, and cardiovascular collapse.	Yes	Rx: Adderall, Concerta, Ritalin Non-Rx: Cocaine, methamphetamine
TOBACCO	Increases dopamine, stimulates the Central Nervous System.	Increased blood pressure, breathing and heart rate, chronic bronchitis, cancer, heart disease.	Nicotine poisoning, difficulty breathing, vomiting, fainting, headache, weakness and increased or decreased heart rate, possible death.	Yes	Forms: Cigarettes, cigars, bidis, smokeless tobacco, Nicotine

Drug Enforcement Agency. (2017). *Drugs of abuse: A DEA resource guide*. Retrieved from https://www.dea.gov/pr/multimedia-library/publications/drug_of_abuse.pdf#page=50

National Institute on Alcohol Abuse and Alcoholism [NIAAA]. (2015). Beyond hangovers: Understanding alcohol's impact on your health. Retrieved from <https://www.niaaa.nih.gov/alcohol-health/alcohols-effects-body>

NIAAA. (2015). Alcohol overdose: The dangers of drinking too much. Retrieved from <https://pubs.niaaa.nih.gov/publications/alcoholoverdosefactsheet/overdosefact.htm>

For more information, visit www.drugabuse.gov/ and www.samhsa.gov/



Drug and Alcohol Abuse Education Programs

Resources for Faculty and Staff

Penn State’s Employee Assistance Program (EAP) is available for Penn State employees if they have a problem with substance abuse or if someone they know may have a problem. If you suspect that you or someone close to you may have a problem with alcohol or other drugs . . . stop hurting and start healing. For more information about the University’s drug and alcohol prevention efforts, please see the “Health Promotion and Wellness, University Health Services” and “Crime Prevention and Safety Awareness Programs” sections of this Annual Security Report.

- Penn State faculty and staff can reach the EAP, Health Advocate, 24 hours a day, 7 days a week, by calling 866-799-2728.
- Any employee or supervisor with additional questions related to alcohol and other drug problems may contact Labor and Employee Relations at 814-867-0041.



Resources for Students

Campus Resources			
University Police and Public Safety	100 University Drive Monaca, PA 15061	Office: 724-733-3840 Emergency: 724-773-3888	https://beaver.psu.edu/student-life/safety
Disability Services Services: - Academic adjustments - Auxiliary aids	Center for Academic Achievement 105 Ross Administration Building 100 University Drive Monaca, PA 15061	724-773-3867	http://beaver.psu.edu/disability
Office of Student Conduct	Student Affairs 113 Student Union Building 100 University Drive Monaca, PA 15061	724-773-3959	http://beaver.psu.edu/office-student-conduct
Director of Finance and Business	Finance and Business 101 Ross Administration Building 100 University Drive Monaca, PA 15061	724-773-3551	http://beaver.psu.edu/finance-and-business-office
Victim Witness Advocate	Campus Nurse/Health Center	724-773-3955	http://beaver.psu.edu/sexual-assault-victim-information
	Residence Life	M-F 8 am–5 pm 724-773-3959 M-F 8 am–8 pm and weekends 724-480-6245	
	Student Affairs	724-773-3959	
	University Police and Public Safety	724-773-3888	
University Health Services	104 Ross Administration Building Penn State Beaver Monaca, PA 15061	724-773-3955	http://beaver.psu.edu/student-life/health-services

Campus Resources			
Penn State Human Resources	Penn State Beaver Human Resources Office 201 Ross Administration Building 100 University Drive Monaca, PA 15061	724-773-3550	http://beaver.psu.edu/office-human-resources
Employee Assistance Program	Human Resources Office 201 Ross Administration Building 100 University Drive Monaca, PA 15061	866-799-2728	www.healthadvocate.com/psu
Health Matters	Human Resources Office 201 Ross Administration Building 100 University Drive Monaca, PA 15061	724-773-3550	https://hr.psu.edu/health-initiatives

Community Resources			
Alcoholics Anonymous (AA)	N/A	Contact by email on website	http://www.beavercountyyaa.com/
Beaver County HELP Line	CONTACT Beaver Valley P.O. Box 584 Beaver, PA 15009	724-728-3650	http://www.beavercountypa.gov/Depts/CommDev/Pages/Help.aspx
Beaver County Drug and Alcohol	Beaver County Drug and Alcohol 1050 Eighth Avenue 2nd Floor Beaver Falls, PA 15010	724-847-6220	http://www.beavercountypa.gov/Depts/BH/Pages/Drug-Alcohol.aspx
Community Help	Community Services Program 1013 Eighth Avenue Beaver Falls, PA 15010	724-770-2040	http://www.beavercountypa.gov/Depts/CommDev/Pages/CommServPrograms.aspx
Women's Resource Center	Women's Center of Beaver County PO Box 428 Beaver, PA 15009	724-775-0131	http://www.womenscenterbc.org/
Community-based Rape Crisis/ Domestic Violence Services	Women's Center of Beaver County PO Box 428 Beaver, PA 15009	724-775-0131	http://www.womenscenterbc.org/
Pennsylvania Coalition Against Domestic Violence	PCADV 3605 Vartan Way Suite 101 Harrisburg, PA 17110	1-800-799-7233	http://www.pcadv.org/
Pennsylvania Coalition Against Rape – 24-hour hotline	Women's Center of Beaver County PO Box 428 Beaver, PA 15009	888-772-7227 724-775-0131	http://www.pcar.org/ http://www.womenscenterbc.org

ANNUAL DISCLOSURE OF CRIME STATISTICS

While Penn State Beaver is a reasonably safe environment, crimes do occur. In addition to the Clery Act crimes statistics, other common crimes that occur on campus are outlined below.

Theft

Theft is a common occurrence on college campuses. Often, this is due to the fact that theft is often seen as a crime of opportunity. Confined living arrangements, recreation facilities, and many open classrooms and laboratories provide thieves with multiple opportunities. Occupants of the residence halls often feel a sense of security and home atmosphere and become too trusting of their peers, while other leave classrooms and laboratories unlocked when not occupied for short periods of time.

It is important to be very vigilant when it comes to suspicious persons. Never leave items and valuables lying around unsecured. Doors should be locked at all times. The following is a list of suggestions to help you avoid becoming a victim of theft.

- Keep doors to residence halls, labs, and classrooms locked when not occupied.
- Don't provide unauthorized access to persons in the buildings or classrooms.
- Do not keep large amounts of money with you.
- Lock all valuables, money, jewelry, and checkbooks in a lock box or locked drawer.
- Keep a list of all valuable possessions including the make, models, and serial numbers.
- Take advantage of the Engraving Programs to have all valuables engraved with specific identifying marks.
- Don't leave laptop computers or textbooks unattended in labs or libraries, even for a short period of time.
- Don't lend credit cards or identification cards to anyone.
- Report loitering or suspicious persons to police immediately; don't take any chances.



Identity Theft

Identity theft is a crime in which someone wrongfully obtains and uses another person's personal information in some ways that involves fraud or deception, typically for economic gain. This personal data could be a Social Security number, bank account, or credit card information.

Persons involved in identity theft often use computers or other forms of media to assist them.

You can take measures to prevent this from happening to you:

- Do not give anyone your personal information unless there is a legitimate reason to trust them.
- Never give your credit card information, date of birth, or other information over the telephone, unless you can confirm the person receiving that information.
- Complete a credit check frequently to assure there is no suspicious activity.
- Examine financial information often to ensure all transactions are authorized and accounted for.
- Use security software and install firewalls on computers.

Clery Act Crimes

Jeanne Clery Disclosure of Campus Security Policy and Campus Crime Statistics Act (20 USC § 1092(f)) requires colleges and universities across the United States to disclose information about crime on and around their campuses. The University Police and Public Safety collects the Clery crime statistics disclosed in the following charts through a number of methods.

The University Police and Public Safety maintains a close relationship with all police departments where Penn State owns or controls property to ensure that crimes reported directly to these police departments that involve the University are brought to the attention of the University Police. In addition to collecting Clery crime statistics from local police departments, all reports of crime incidents made directly to the University Police (through police dispatchers and officers) are entered into an integrated computer aided-dispatch systems/records management system. The entries are recorded in the system in accordance with the crime definitions outlined in the FBI Uniform Crime Reporting Handbook and the FBI National Incident-Based Reporting System Handbook (sex offenses only). To ensure each report is appropriately classified in the correct crime category, after a dispatcher or officer enters the report in the system, a department administrator reviews the report to ensure it is appropriately classified. The department also periodically examines data in the system for appropriate classification.

In addition to the crime data that the University Police maintains, the University collects Clery crime statistics of reports made to various campus security authorities, as defined in this report. The statistics reported in the following charts generally reflect the number of criminal incidents reported to the various campus security authorities. The statistics reported for the subcategories on liquor laws, drug laws, and weapons offenses represent the number of people arrested or referred to campus judicial authorities for respective violations, not the number of offenses documented.

Definitions of Reportable Crimes²

Murder/Manslaughter – defined as the willful killing of one human being by another.

Negligent Manslaughter – defined as the killing of another person through gross negligence.

Rape – Penetration no matter how slight of the vagina or anus with any body part or object, or oral penetration by a sex organ of another person, without the consent of the victim. This offense includes the rape of both males and females.

Fondling – the touching of the private body parts of another person for the purpose of sexual gratification, without the consent of the victim, including instances where the victim is incapable of giving consent because of his/her age or because of his/her temporary or permanent mental or physical incapacity

Incest – Non-forcible sexual intercourse between persons who are related to each other within the degrees wherein marriage is prohibited by law

Statutory Rape – Non-forcible sexual intercourse with a person who is under the statutory age of consent

Robbery – defined as taking or attempting to take anything of value from the care, custody, or control of a person or persons by force or threat of force or violence and/or by putting the victim in fear.

Aggravated Assault – defined as an unlawful attack by one person upon another for the purpose of inflicting severe or aggravated bodily injury. This type of assault usually is accompanied by the use of a weapon or by means likely to produce death or great bodily harm.

Burglary – unlawful entry of a structure to commit a felony or a theft.

Motor Vehicle Theft – theft or attempted theft of a motor vehicle.

Arson – any willful or malicious burning or attempt to burn, with or without intent to defraud, a dwelling house, public building, motor vehicle or aircraft, personal property of another, etc.

Domestic Violence – Includes felony or misdemeanor crimes of violence committed by a current or former spouse of the victim, by a person with whom the victim shares a child in common, by a person cohabitating with or has cohabitated with the victim as a spouse, by a person similarly situated to a spouse of the victim under the domestic or family laws of the Commonwealth of Pennsylvania, or by any other person against an adult or youth victim who is protected from that person's acts under the domestic or family violence laws of the jurisdiction. Domestic Violence is not defined by Pennsylvania state statute.

Dating Violence – Means violence committed by a person—(a) who is or has been in a social relationship of a romantic or intimate nature with the victim; and (b) where the existence of such a relationship will be determined by the reporting party's statement and based on a consideration of the following factors:

- (i) The length of the relationship.
- (ii) The type of relationship.
- (iii) The frequency of interaction between the persons involved in the relationship.

Dating Violence is not defined by Pennsylvania state statute.

Stalking – Means engaging in a course of conduct directed at a specific person that would cause a reasonable person to—(a) fear for his or her safety or the safety of others; or (b) suffer substantial emotional distress. In Pennsylvania, a person commits the crime of stalking when the person either:

- (1) engages in a course of conduct or repeatedly commits acts toward another person, including following the person without proper authority, under circumstances which demonstrate either an intent to place such other person in reasonable fear of bodily injury or to cause substantial emotional distress to such other person; or
- (2) engages in a course of conduct or repeatedly communicates to another person under circumstances which demonstrate or communicate either an intent to place such other person in reasonable fear of bodily injury or to cause substantial emotional distress to such other person.

Hate Crimes – includes all of the crimes listed above that manifest evidence that the victim was intentionally selected because the perpetrator's bias against the victim based on one of the Categories of Prejudice listed below, plus the following crimes.

Larceny/Theft – the unlawful taking, carrying, leading or riding away of property from the possession or constructive possession of another.

Simple Assault – unlawful physical attack by one person upon another where neither the offender displays a weapon, nor the victim suffers obvious severe or aggravated bodily injury involving apparent broken bones, loss of teeth, possible internal injury, severe laceration or loss of consciousness.

Intimidation – to unlawfully place another person in reasonable fear of bodily harm through the use of threatening words and/or other conduct but without displaying a weapon or subjecting the victim to actual physical attack.

Destruction/Damage/Vandalism to Property (except Arson) – to willfully or maliciously destroy, damage, deface, or otherwise injure real or personal property without the consent of the owner or the person having custody or control of it.

² Sources: U.S. Department of Education, Office of Postsecondary Education, *The Handbook for Campus Safety and Security Reporting*, 2016 Edition, Washington, D.C., 2016. Violence Against Women Act of 1994. FBI's Uniform Crime Reporting (UCR) Program <https://ucr.fbi.gov/>, *Summary Reporting System (SRS) User Manual*, *National Incident-Based Reporting System (NIBRS) Data Collection Guidelines*, and *Hate Crime Data Collection Guidelines and Training Manual*.

Categories of Prejudice³

Race – A preformed negative attitude toward a group of persons who possess common physical characteristics genetically transmitted by descent and heredity that distinguish them as a distinct division of humankind.

Gender – A preformed negative opinion or attitude toward a person or group of persons based on their actual or perceived gender, e.g., male or female.

Religion – A preformed negative opinion or attitude toward a group of persons who share the same religious beliefs regarding the origin and purpose of the universe and the existence or nonexistence of a supreme being.

Sexual Orientation – A preformed negative opinion or attitude toward a group of persons based on their actual or perceived sexual orientation.

Ethnicity – A preformed negative opinion or attitude toward a group of people whose members identify with each other, through a common heritage, often consisting of a common language, common culture (often including a shared religion) and/or ideology that stresses common ancestry.

National Origin – A preformed negative opinion or attitude toward a group of people based on their actual or perceived country of birth.

Disability – A preformed negative opinion or attitude toward a group of persons based on their physical or mental impairments/challenges, whether such disability is temporary or permanent, congenital or acquired by heredity, accident, injury, advanced age, or illness.

Gender Identity – A preformed negative opinion or attitude toward a person or group of persons based on their actual or perceived gender identity, e.g., bias against transgender or gender non-conforming individuals

Definitions of Clery Act Locations⁴

On-Campus – Any building or property owned or controlled by an institution within the same reasonably contiguous geographic area and used by the institution in direct support of, or in a manner related to, the institution's educational purposes, including residence halls; and is frequently used by students, and supports institutional purposes.

Residence Halls – Any student housing facility that is owned or controlled by the institution, or is located on property that is owned or controlled by the institution, and is within the reasonably contiguous geographic area that makes up the campus is considered an on-campus student housing facility.

Public Property – All public property, including thoroughfares, streets, sidewalks, and parking facilities, that is within the campus, or immediately adjacent to and accessible from the campus.

Non-Campus – Any building or property owned or controlled by a student organization that is officially recognized by the institution; or any building or property owned or controlled by an institution that is used in direct support of, or in relation to, the institution's educational purposes, is frequently used by students, and is not within the same reasonably contiguous geographic area of the institution.



³ Sources: U.S. Department of Education, Office of Postsecondary Education, *The Handbook for Campus Safety and Security Reporting*, 2016 Edition, Washington, D.C., 2016. FBI's Uniform Crime Reporting (UCR) Program <https://ucr.fbi.gov/Hate Crime Data Collection Guidelines and Training Manual>.

⁴ Source: U.S. Department of Education, Office of Postsecondary Education, *The Handbook for Campus Safety and Security Reporting*, 2016 Edition, Washington, D.C., 2016.

CRIME STATISTICS: CLERY DATA

The following annual security report provides crime statistics for selected crimes that have been reported to local police agencies or to campus security authorities. The statistics reported here generally reflect the number of criminal incidents reported to the various authorities. The statistics reported for the sub-categories on liquor laws, drug laws, and weapons offenses represented the number of people arrested or referred to campus judicial authorities for respective violations, not the number of offenses documented. This report complies with 20 U.S. Code Section 1092 (f).

OFFENSES	2015					2016					2017				
	On-Campus Property		Public Property	Non-Campus	Unfounded (NOT INCLUDED IN CLERY OFFENSE COUNTS)	On-Campus Property		Public Property	Non-Campus	Unfounded (NOT INCLUDED IN CLERY OFFENSE COUNTS)	On-Campus Property		Public Property	Non-Campus	Unfounded (NOT INCLUDED IN CLERY OFFENSE COUNTS)
	Residence Hall	Total On-Campus				Residence Hall	Total On-Campus				Residence Hall	Total On-Campus			
Murder/Non-negligent Manslaughter*	0	0	0	0	0	0	0	0	0	0	0	1	0	0	0
Negligent Manslaughter	0	0	0	0	0	0	0	0	0	0	0	0	0	0	0
Rape	0	0	0	0	0	2	2	0	0	0	1	1	0	0	0
Fondling	0	0	0	0	0	0	0	0	0	0	0	0	0	0	0
Statutory Rape	0	0	0	0	0	0	0	0	0	0	0	0	0	0	0
Incest	0	0	0	0	0	0	0	0	0	0	0	0	0	0	0
Robbery	0	0	0	0	0	0	0	0	0	0	0	1	0	0	0
Aggravated Assault	0	0	0	0	0	0	0	0	0	0	0	0	0	0	0
Burglary*	0	0	0	0	0	0	0	0	0	0	0	0	0	0	1
Motor Vehicle Theft*	0	0	0	0	0	0	0	0	0	0	0	1	0	0	0
Arson	1	1	0	0	0	5	5	0	0	0	6	6	0	0	0
VAWA OFFENSES															
Domestic Violence*	0	0	0	0	0	0	0	0	0	0	0	1	0	0	0
Dating Violence	1	1	0	0	0	0	1	0	0	0	0	0	0	0	0
Stalking	0	0	0	0	0	0	0	0	0	0	0	0	0	0	0
ARRESTS															
Weapons	0	0	0	0	0	0	0	0	0	0	0	0	0	0	0
Drugs	2	4	0	0	0	5	6	0	0	0	1	6	0	0	0
Alcohol	0	0	0	0	0	4	4	0	0	0	6	6	0	0	0
REFERRALS															
Weapons	0	0	0	0	0	0	0	0	0	0	0	0	0	0	0
Drugs	1	3	0	0	0	2	2	0	0	0	1	1	0	0	0
Alcohol	1	1	0	0	0	4	4	0	0	0	3	3	0	0	0
HATE CRIMES															
Murder/Non-negligent Manslaughter	0	0	0	0	0	0	0	0	0	0	0	0	0	0	0
Negligent Manslaughter	0	0	0	0	0	0	0	0	0	0	0	0	0	0	0
Rape	0	0	0	0	0	0	0	0	0	0	0	0	0	0	0
Fondling	0	0	0	0	0	0	0	0	0	0	0	0	0	0	0
Statutory Rape	0	0	0	0	0	0	0	0	0	0	0	0	0	0	0
Incest	0	0	0	0	0	0	0	0	0	0	0	0	0	0	0
Robbery	0	0	0	0	0	0	0	0	0	0	0	0	0	0	0
Aggravated Assault	0	0	0	0	0	0	0	0	0	0	0	0	0	0	0
Burglary	0	0	0	0	0	0	0	0	0	0	0	0	0	0	0
Motor Vehicle Theft	0	0	0	0	0	0	0	0	0	0	0	0	0	0	0
Arson	0	0	0	0	0	0	0	0	0	0	0	0	0	0	0
Larceny	0	0	0	0	0	0	0	0	0	0	0	0	0	0	0
Simple Assault	0	0	0	0	0	0	0	0	0	0	0	0	0	0	0
Intimidation	0	0	0	0	0	0	0	0	0	0	0	0	0	0	0
Vandalism	0	0	0	0	0	0	0	0	0	0	0	0	0	0	0

Hate Crime Key: (D) Disability (E) Ethnicity (Ra) Race (Re) Religion (S) Sexual Orientation (G) Gender (N) National Origin (GI) Gender Identity

*2017 data revised June 14, 2019 to correct error of omission.

Pennsylvania Uniform Crime Report Act

Crime statistics are reported to the Pennsylvania State Police for annual publication in “Crime in Pennsylvania, the Uniform Crime Report of the Commonwealth.” These statistics are also available in the U.S. Department of Justice Publication, Crime in the United States, which is available at all public libraries and most law enforcement agencies within the United States. UCR crime statistics are also available on the PA State Police website at <http://www.paucrs.pa.gov/UCR/Reporting/RptMain.asp>

CAMPUS: Beaver	2015			2016			2017		
	ON CAMPUS			ON CAMPUS			ON CAMPUS		
	ACTUAL OFFENSES	*CRIME RATE	ARREST DATA	ACTUAL OFFENSES	*CRIME RATE	ARREST DATA	ACTUAL OFFENSES	*CRIME RATE	ARREST DATA
PART I OFFENSES									
CRIMINAL HOMICIDE	0	0	0	0	0	0	0	0	0
Murder & Non-negligent Manslaughter	0	0	0	0	0	0	0	0	0
Manslaughter by Negligence	0	0	0	0	0	0	0	0	0
FORCIBLE RAPE	0	0	0	0	0	0	0	0	0
Rape by Force	0	0	0	1	125	0	1	126	0
Assault to Rape - Attempts	0	0	0	0	0	0	0	0	0
ROBBERY	0	0	0	0	0	0	0	0	0
Firearm	0	0	0	0	0	0	1	126	0
Knife or Cutting Instrument	0	0	0	0	0	0	0	0	0
Other Dangerous Weapon	0	0	0	0	0	0	0	0	0
Strong Arm (Hands, Feet, etc.)	0	0	0	0	0	0	0	0	0
ASSAULT	0	0	0	0	0	0	0	0	0
Firearm	0	0	0	0	0	0	0	0	0
Knife or Cutting Instrument	0	0	0	0	0	0	0	0	0
Other Dangerous Weapon	0	0	0	0	0	0	0	0	0
Hands, Fists, Feet, etc.	0	0	0	0	0	0	0	0	0
BURGLARY	0	0	0	0	0	0	0	0	0
Forcible Entry	0	0	0	0	0	0	0	0	0
Unlawful Entry - No Force	0	0	0	0	0	0	0	0	0
Attempted Forcible Entry	0	0	0	0	0	0	0	0	0
LARCENY - THEFT (Exc. Motor Vehicles)	4	511	1	12	1494	0	8	1011	0
MOTOR VEHICLE THEFT	0	0	0	0	0	0	0	0	0
Autos**	0	0	0	0	0	0	1	126	1
Trucks and Buses	0	0	0	0	0	0	0	0	0
Other Vehicles	0	0	0	0	0	0	0	0	0
ARSON	1	128	0	3	374	0	6	759	0
TOTAL PART I OFFENSES	5	639	1	16	1993	0	17	2148	1
PART II OFFENSES									
Assaults - Non-Aggravated	2	255	1	2	249	2	0	0	0
Forgery and Counterfeiting	0	0	0	0	0	0	0	0	0
Fraud	1	128	0	0	0	0	1	126	0
Embezzlement	0	0	0	0	0	0	0	0	0
Stolen Prop., Rec., Possess., etc.	0	0	0	0	0	0	0	0	0
Vandalism	5	639	0	9	1121	0	6	759	0
Weapons, Carrying, Possess., etc.	0	0	0	0	0	0	0	0	0
Prostitution & Commercialized Vice	0	0	0	0	0	0	0	0	0
Sex Offenses (Exc. Prostitution & Rape)	0	0	0	1	125	0	0	0	0
Drug Abuse Violations	0	0	0	0	0	0	0	0	0
S Opium-Cocaine	0	0	0	0	0	0	0	0	0
A Marijuana	0	0	0	1	125	1	2	253	1
L Synthetic	0	0	0	0	0	0	0	0	0
E Other	0	0	0	0	0	0	0	0	0
P Opium-Cocaine	0	0	0	0	0	0	0	0	0
O Marijuana	20	2554	4	29	3611	3	29	3666	5
S Synthetic	0	0	0	0	0	0	0	0	0
S Other	0	0	0	0	0	0	0	0	0
Gambling	0	0	0	0	0	0	0	0	0
Book Making	0	0	0	0	0	0	0	0	0
Numbers, etc.	0	0	0	0	0	0	0	0	0
Offenses Against Family & Children	0	0	0	0	0	0	0	0	0
Driving Under the Influence	0	0	0	0	0	0	0	0	0
Liquor Laws	0	0	0	5	623	4	5	632	6
Drunkenness	0	0	0	0	0	0	0	0	0
Disorderly Conduct	2	255	0	2	249	0	2	253	0
Vagrancy	0	0	0	0	0	0	0	0	0
All Other Offenses (Exc. Traffic)	10	1277	1	15	1868	2	9	1138	2
TOTAL PART II OFFENSES	40	5108	6	64	7970	12	54	6827	14
TOTAL PART I & PART II OFFENSES	45	5747	7	80	9963	12	71	8975	15

Beaver	
2017: Employees	136
Students	655

*RATE: Per 100,000 population. Population is calculated using full-time equivalent students, faculty, and staff.
 **2017 data revised June 14, 2019 to correct error of omission.
 (“()” indicates the number of incidents, if any, that are classified as hate crimes by the Hate Crimes Statistics Act (28 U.S.C. 534).
 Footnote: These statistics comply with the Pennsylvania Campus Security Act (PA Title 24 Section 2502-1 to -5) enacted May 1988.

Housing Report

(1) Types of student housing available (on-campus, off-campus; single room, double, group; single sex, coed; undergraduate, graduate, married; etc.)

Undergraduate On-Campus Housing	Double Rooms	Suites	Singles	Apartments
Penn State Beaver	X			

All campus residence halls are co-ed within a building but single gender within a room, suite, or apartment. Housing for graduate or married students is not available, nor is family housing.

(2) Policies on housing assignments and requests by students for assignment changes

Assignment Policies:

Students are able to request a roommate when they accept their contract; every effort is made to honor mutual roommate requests. However, a student may state that their preferred room type or location is more important than their preferred roommate; if the preferred room type or location will not accommodate their roommate, they are then assigned to the preferred room without their requested roommate.

Opportunities to Change Room Assignments

A direct room exchange is a change of assignment with another student of the same gender and may be processed for most types of accommodations. Direct room exchanges must be completed online through www.eLiving.psu.edu. A direct room exchange cannot be processed for students assigned to a medically equipped room due to a medical need, such as air conditioning, unless the change is to a similarly equipped room. A direct room exchange cannot be processed if the student is assigned to a Special Living Option through a Special Living Option Contract, sorority housing, or certain other special housing. Direct room exchanges can be processed only through the 15th week of the semester.

An open room change is a change of assignment to a vacant space. A student interested in changing their room assignment for spring semester may do so during the posted time periods beginning in November and continuing through early December. During the posted time periods, students will be informed where to view the list of rooms being vacated for spring semester. Interested students must follow the process outlined for requesting a room change. The Housing and Food Services office will process the change and notify the student when the request is complete. After the second week of spring semester, depending on room availability, a list of vacancies is posted at the Housing and Food Services office. Room changes are processed on a first-come, first-served basis to an available space in accordance with the policy/instructions provided with the posting. After the open room change period ends and supplemental rooms have been emptied, Housing and Food Services will consolidate vacancies. Upon notification, if a student has a vacancy in their room, they may choose from the following options:



1. Space permitting, retain the room for the rest of the semester on a reduced-capacity basis for an additional charge. All students assigned to supplemental living accommodations must be re-assigned to permanent living accommodations before such requests will be honored; or
2. Process a room change to a vacancy in a similar room (same capacity) with another student of the student's choice; or
3. Have their room placed on a list of rooms available for new students or current students whose circumstances warrant a room assignment change to select for assignment. Once a roommate is assigned, the student will not have the option to pay the additional fee and maintain the room in a reduced-capacity manner.

Emergency Room Changes

An emergency room change will be arranged only when all other options to resolve differences between roommates have been thoroughly explored. If a student feels that an emergency room change is needed, the student must discuss the issue with a Residence Life staff member. If the staff member determines that an emergency exists and space is available, they will contact the Housing and Food Services office to process a change in assignment.

(3) Policies concerning the identification and admission of visitors in student housing facilities

GUESTS

The residence halls are intended for use by residents of the building and their invited guests. A guest is defined as a person visiting a resident of the residence hall at the resident's invitation. Delivery persons are not considered to be guests for purposes of this policy.

To ease the congestion of the move-in period and to allow roommates the opportunity to discuss what to do about overnight guests in the room, no overnight guests will be allowed in the residence halls until the first day of classes, and then only with the permission of the roommate.

The following stipulations relate to all guests:

1. The host student is responsible for ensuring that their guests are aware of University and residence hall policies. Guests are held responsible for their own actions and for knowledge of University and residence hall regulations. However, hosts may be held accountable for damages done by their guests, unless the guest can be identified as a University student. Hosts may also be held accountable for their guests' behavior.
2. Residents may have guests in their rooms only if there is no objection from their roommate(s).
3. Neither room keys nor door access cards will be provided for guests. Residents are not to give their keys or Penn State id+ Card to a guest for them to gain entrance to the room or the building.
4. Students may have an overnight guest in their room for a maximum of three consecutive nights. The University reserves the right to revoke this privilege. Guests may not move from one host's room to another to extend their stay in the residence halls.
5. Only residents and their invited guests are permitted in the living areas of the building other than the lobby. These areas include individual rooms and floor lounges. Individuals found in the building who are not residents or guests of residents are considered trespassing.
6. Guests are to use the appropriate gender restroom/shower facilities.
7. All guests must be escorted by a resident of the building at all times. A staff member may confront an individual if he/she is not recognized as a resident of that building and/or if a resident of the building is not escorting the individual.

Students charged with violations of the guest regulation will be subject to University disciplinary action. An unescorted guest who is a University student will be subject to University discipline.

Students who need a cot and/or linens should make arrangements at the Housing and Food Services office. Charges for these services should be paid in advance; the deadline for reservations is 3:00 p.m., Monday through Friday.



Escort Policy – All residence halls operate under 24-hour card access.

1. Only residents and their guests are permitted in the living areas of the building, i.e., locations other than the lobby and that include individual rooms and floor lounges.
2. Guests are to use the appropriate restroom/shower facilities, i.e., male and female.
3. All guests (both male and female) must be escorted by a resident of the building at all times.

(4) Measures to secure entrances to student housing facilities

Every residence hall is equipped with an electronic, computerized card access and CCTV system that permits access to the hall by residents of the building only. The system is operational 24 hours a day, seven days a week. Adjustments to access hours may be made during the fall arrival period and spring semester closing.

Students may enter only their assigned building by swiping their id+ cards in the card reader, located at the front lobby, and—in some halls—at other doors. If the id+ card fails to unlock the door of the student's assigned residence hall, the student may gain entry with the assistance of a roommate, the staff member on duty, or in an extreme emergency, by contacting University Police. If a student has pizza or other food items delivered, the student must be in the lobby to meet the vendor at the front door. The delivery person will not be given access to the lobby. Students who want to visit a resident who lives in another building will need to announce their planned arrival using the telephone provided in the area or the commons building. The resident host must come to the entrance and escort the visiting student to the room, and later out of the residence hall.

If students or guests leave the hall through any of the regular building exits, they should be aware that exit doors are not to be held open for prolonged periods of time. An alarm at the door will sound and someone will be dispatched to determine if the door has been blocked open. Residents are not permitted to allow access to the buildings to anyone other than themselves and their invited guests.

Student Involvement

Our greatest ally in providing a safe and secure residence hall environment is our students. So it is important that each student takes the initiative to assist the residence life staff in creating a safe and secure hall for all the residents. Please keep the following tips in mind:

- Do not allow strangers to enter the residence hall with you. (No “piggybacking”)
- Notify the staff member on duty if someone has insisted upon entering the hall with you. Observe the offender to get a good physical description and note the direction he or she is walking.
- Keep your room locked at all times—even when you’re sleeping, and especially when you’re gone.
- Report a malfunctioning card access reader or door immediately.
- Meet your guests/visitors at the lobby door.
- Never lend your id + card or room key to others.
- Immediately report a lost or stolen id + card.
- Report suspicious activity immediately.

(5) Standard security features used to secure doors and windows in students’ rooms

At campuses where card access is installed on room doors, students are required to swipe the Penn State id+ Card and enter their personal four-digit pin code. This technology is currently available at Penn State Beaver, Penn State Greater Allegheny, Penn State Mont Alto, and at all first-year student residence areas at Penn State Harrisburg.

At all other locations, including Penn State Altoona, Penn State Berks, Penn State Behrend, Penn State Harrisburg upperclass student residence areas, and Penn State Hazleton, room keys are issued to individual students. Each key has a unique key code and a “Do Not Duplicate” imprint.

Residence hall windows, including those in student rooms, are mechanically fixed to open only a narrow distance and are lockable from the inside. Screens are installed at all windows.

(6) Type, number, and description of security training provided to employees, including security personnel, assigned to student housing facilities

Campus	Housekeeper	Maintenance	Housing Manager	Residence Life Professional Staff	Residence Life Para-Professional Staff
Penn State Beaver	1	1	1 primary; 1 additional	1 Assoc Director; 2 Coordinators	5 Resident Assistants

Housing Training

Housekeepers, Maintenance personnel, and Housing Managers attend *Five OUTs: Surviving an Active Shooter*, facilitated by Penn State University Police and Public Safety and offered yearly; Mandated Reporter Training annually to new employees with refreshers as needed; and Fire Safety training annually.

Housing Managers receive initial training on using the card access and CCTV systems and refreshers as needed.



Residence Life Training

Our professional staff gets a variety of security training, which includes:

- On-duty protocol training (annually)
- Clery training (annually)
- Mandated reporter training for child abuse (annually)
- Risk management training (annually)
- Community standards/disciplinary protocol training (annually)
- Fire safety training (annually)
- Active shooter training (annually)
- Crisis response/emergency training (ongoing)

They also receive written manuals for their positions, emergency response, community standards protocols, and risk management guidelines.

Our para-professional staff receives training at least twice a year, which includes:

- Duty protocols
- Crisis response
- Safety/security protocols
- Emergency response training

Clery reporter training is held at least once a year. All para-professional staff also receives an RA protocol manual, participate in a semester long pre-service class that also includes information on protocols, fire safety training (annually), and active shooter training.

(7) The type and frequency of programs designed to inform student housing residents about housing security and enforcement procedures

Student Training:

- House meetings (fall/spring opening, and ongoing as needed)
- Stall stories articles on student safety (at least once a semester) in writing in their Terms and Conditions
- Bulletin boards (typically at least once a year)
- Monthly fire drills
- Usually at least one safety program/RA/semester including:
 - programs on piggy-backing
 - escort policy
 - fire safety
 - other personal safety
 - locking doors, etc.



(8) Policy and any special security procedures for housing students during low-occupancy periods such as holidays and vacation periods

Students may not stay during breaks without prior approval from Housing and Residence Life.

Residence Life staff must be on duty over the break periods if students are in residence. This includes being in a radius 10 minutes from campus and carrying the duty phone. Depending on the number of students a para-professional student staff member must be hired during this time.

Currently, many campuses either eliminate police shifts during campus break closures or significantly limit the hours. In these cases, campuses rely on local or state police to ensure campus safety. If students were to be remaining on campus, full-time campus police shifts should continue with regular campus rounds to ensure student safety.

For security purposes and ease of management, it is preferable where possible to cluster students together or at least in the same building during these periods. This may mean that students will be assigned to “temporary” space during breaks, if such space exists and is vacant.

(9) Policy on the housing of guests and others not assigned to the student housing or not regularly associated with the institution of higher education

Guest apartments in residence halls are available for use by campus guests, which may include any of the following: speaker series guests; campus clubs and organizations guests; Housing and Food Services administration guests; CEO/Dean/Provost’s guests; and student’s parents (during an on-campus emergency situation). The guest apartment is not to be used for students or for handling student emergency situations. Questionable guests must be pre-approved by the Housing and Food Services administrative office.

Guests may stay in the apartment for a maximum of a two-week stay, unless the Housing and Food Services administrative office authorizes a longer stay.



Annual Fire Safety Report



The Higher Education Opportunity Act enacted on August 14, 2008, requires institutions that maintain on-campus student housing facilities to publish an Annual Fire Safety Report that contains information about campus fire safety practices and standards of the institution. The following Report details all information required by this Act for the Penn State Beaver campus of The Pennsylvania State University.

Definitions

The following terms are used within this report. Definitions have been obtained from the Higher Education Opportunity Act.

On-Campus Student Housing – A student housing facility that is owned or controlled by the institution, or is located on property that is owned or controlled by the institution, and is within the reasonably contiguous geographic area that makes up the campus.

Fire – Any instance of open flame or other burning in a place not intended to contain the burning or in an uncontrolled manner.

Residence Hall Fire Drills

Fire drills are conducted in all on-campus Housing and Food Services-operated residence halls during the academic year to allow residents to become familiar with building alarm systems and practice their evacuation skills. The drills are coordinated and conducted by the Resident Coordinators, Resident Assistants, Community Assistants, Housing Management, and University Police and Public Safety. All people inside the residence hall during the drill are required to evacuate the building.

Fire Safety

Penn State takes fire safety very seriously and continues to enhance its programs to the University community through education, engineering, and enforcement. Educational programs are presented throughout the year to faculty, staff, and students so they are aware of the rules and safe practices. These programs, which are available at all campuses, include identification and prevention of fire hazards, actual building evacuation procedures and drills, specific occupant response to fire emergencies, and hands-on use of fire extinguishers.

All University residence halls have emergency evacuation plans and conduct fire drills during the academic year to allow occupants to become familiar with and practice their evacuation skills.

Penn State has been a leader in ensuring the safety of students, faculty, staff, and visitors who live and work in University-operated residences. Automatic sprinkler systems and fire alarm systems are recognized engineered building features that help to provide a fire-safe living environment. All University-operated residence halls and apartments are provided with automatic sprinkler systems, smoke detectors, and building fire alarm systems to provide early detection and warning of a possible fire emergency. Additionally, Housing and Food Services staff members at Penn State Beaver are trained annually on hands-on use of fire extinguishers and emergency procedures in the event of a fire.

The University maintains and tests all fire alarms and automatic fire suppression systems to ensure system readiness and proper operation in the event of a fire emergency.

The University has adopted and developed numerous Safety Policies and Guidelines to help promote a safe living and work environment at all University locations. These policies, guidelines, and other fire safety information can be accessed at <http://www.ehs.psu.edu>.

Additional protection is provided by Penn State Beaver Police officers who are trained for initial response to fire incidents occurring at Penn State Beaver facilities. Officers provide assistance in building evacuation and extinguishment and confinement of small fires.

2015/2016/2017 Fire Statistics for On-Campus Student Housing Facilities

Date	Location	Address	Cause	Damage Amount	Injuries	Deaths
10/15/15	Harmony Hall	110 University Dr.	Intentional – burnt ends of paper door name tags	\$0–\$99	0	0
9/14/16	Harmony Hall	110 University Dr.	Intentional – charred bulletin board	\$0–\$99	0	0
10/3/16	Harmony Hall	110 University Dr.	Intentional – charred door name tag	\$0–\$99	0	0
10/13/16	Harmony Hall	110 University Dr.	Intentional – charred door name tag	\$0–\$99	0	0
11/12/16	Harmony Hall	110 University Dr.	Intentional – charred door name tag	\$0–\$99	0	0

Date	Location	Address	Cause	Damage Amount	Injuries	Deaths
12/12/16	Harmony Hall	110 University Dr.	Intentional – charred door name tag	\$0–\$99	0	0
1/22/17	Harmony Hall	110 University Dr.	Intentional – Burnt flyer	\$0–\$99	0	0
1/30/17	Harmony Hall	110 University Dr.	Intentional – Burnt flyer	\$0–\$99	0	0
2/5/17	Harmony Hall	110 University Dr.	Intentional – Burnt name tag	\$0–\$99	0	0
2/26/17	Harmony Hall	110 University Dr.	Intentional – Burnt Poster	\$0–\$99	0	0
4/24/17	Harmony Hall	110 University Dr.	Intentional – Burnt Paper	\$0–\$99	0	0
4/27/17	Harmony Hall	110 University Dr.	Intentional – Burnt Poster	\$0–\$99	0	0



Description of On-Campus Student Housing Fire Safety Systems—Residence Halls/Apartments

Building	Address	Total Fires			Sprinkler Protection Full Coverage = All common areas & individual rooms	Fire Alarm System SD (smoke detector) MP (manual pull station)	Monitored Fire Alarm System	Fire Rated Corridors	# Fire Drills
		2015	2016	2017					
Harmony Hall	110 University Drive	1	5	6	Full Coverage	SD / MP	Yes	Yes	7

Prohibitions on Portable Electrical Appliances, Smoking, and Open Flames

All on-campus housing facilities prohibit the following activities and items:

1. Smoking is not permitted in any building.
2. The presence or use of candles, incense burners, oil lamps, and other open-flame devices is not permitted in on-campus housing facilities.
3. The presence or use of torchiere halogen floor lamps is not permitted in any building.
4. Individuals shall not obstruct or tamper with fire safety equipment (e.g., sprinklers, fire alarms, fire extinguishers).
5. The possession or use of fireworks is not permitted.
6. Occupant-provided refrigerators and microwaves are not permitted in on-campus housing facilities.

Additional information about residence hall living and policies is available at: beavercampusliving.psu.edu/safety-and-security

Evacuation Procedures

Penn State Housing and Residence Life Offices provide residents with fire evacuation procedures and conduct fire drills during each semester. Residents are informed of the following procedures.

If you discover a fire in the residence hall:

1. Immediately activate the nearest manual fire alarm pull station. The fire alarm system will alert people to evacuate the building.
2. Call 911 from a safe location to report the fire and to give as much information as possible.

Evacuation from the building:

1. Upon activation of the fire alarm system, everyone shall immediately leave the building.
2. Feel the door. If it is hot, do not open it.
3. If the door is cool, crouch low and open the door slowly. Close the door quickly if smoke is present.
4. If the hallway is smoke-free or there is a light smoke condition, proceed to the nearest exit. If a light smoke condition is present, stay below the smoke (crouch or crawl).
5. Leave the building and meet at your designated evacuation meeting site.
6. Never use elevators during a fire evacuation.

If you are trapped in your room:

1. Place material (e.g., clothing, rug) at base of door to prevent smoke from entering the room.
2. Open your window, wave a piece of material, and yell to attract the attention of people outside.
3. Call 911 and report your location.
4. Stay low; breathe fresh air near the windows.
5. Await rescue.



Fire Safety Education and Training Programs for Students, Faculty, and Staff

University Police and Public Safety in coordination with Residence Life provide annual fire safety training to Resident Assistants (RA) and Coordinators (CA).

Topics addressed during this training include:

1. Fire prevention in the residence hall
2. What to do in the event of a fire
3. Evacuation planning
4. How to report a fire or other emergency
5. How residence hall fire safety systems operate

Resident Assistants and Community Assistants coordinate additional fire safety training and education programs for residence hall students.

Other general safety and fire safety information is available to students, faculty, and staff on the Environmental Health and Safety website at www.ehs.psu.edu.

Fire Incident Reporting

Students, faculty, and staff are instructed to call 911 to report a fire emergency.

Immediate notification for a non-emergency incident (e.g, fire is out, evidence that something burned, attempted intentional burning of material) shall be made to:

University Police and Public Safety: 724-773-3888

Residence Life: 724-773-3956

Plans for Future Improvements in Fire Safety

Penn State continues to monitor trends related to residence hall fire incidents and alarms to provide a fire-safe living environment for all students. New programs and policies are developed as needed to help ensure the safety of all students, faculty, and staff.

Housing and Food Services has begun to purchase microwave ovens with internal smoke detection which turn the microwave off when smoke is detected within the unit. This reduces the potential of fire and nuisance fire alarm activations originating from within the microwave oven during cooking activities.

IMPORTANT PHONE NUMBERS

Penn State Beaver Police/Fire/EMS

Emergency: 724-773-3888 or 911

Business: 724-773-3888

University Police and Public Safety Office, located behind the Student Union Building, Penn State Beaver

University Health Services

724-733-3955

Student Health Center, Ross Administration Building,
Penn State Beaver

Heritage Valley Health System, Beaver

1000 Dutch Ridge Road

Beaver, PA 15009

724-728-7000

Heritage Valley Health System, Sewickley

720 Blackburn Road

Sewickley, PA 15143

412-741-6600

Environmental Health and Safety

814-865-6391

Eisenhower Parking Deck, Penn State University Park

Student Personal Counselor

Student Union Building

Penn State Beaver

724-773-3961

Office of Student Affairs

Student Union Building

Penn State Beaver

724-773-3950

PSUAlert

PSUAlert is the name of Pennsylvania State University's mass notification service. This system allows the university to send text messages, voice mails, and e-mails to the campus community concerning weather-related school closings, delays, and other emergencies. The service is available to all employees and students of Penn State. The university does not charge for the service, however there may be a fee charged based on your phone plan. To register, go to <http://psualert.psu.edu> and follow the instructions.

Register to Vote

All students are urged to register to vote in local, state, and national elections. Go to http://www.pikepa.org/election/dl/pa_voter_registration.pdf for a printable Voter Registration Application. Note that Adobe Acrobat must be loaded to view the Voter Registration Application.

In Case of Emergency

DIAL: 911
on any telephone

If you are on campus, you can reach University Police and Public Safety by dialing **724-773-3888** from any phone.

University Police and Public Safety may also be reached by pressing the emergency button on any of the emergency or courtesy phones located around campus.

